



**COMMONWEALTH OF KENTUCKY  
TRANSPORTATION CABINET**

Frankfort, Kentucky 40622  
[www.transportation.ky.gov/](http://www.transportation.ky.gov/)

**Matthew G. Bevin**  
Governor

**Greg Thomas**  
Secretary

**May 17, 2018**

CALL NO. 200  
CONTRACT ID NO. 181013  
ADDENDUM # 1

**Subject: WARREN-BUTLER COUNTY, 121GR18D013-NHPP  
Letting May 25, 2018**

- (1) Revised - Cover Page - Page 1 of 764
- (2) Revised - Page 4 - Page 4 of 764
- (3) Revised - General Summary - Pages 29-32 of 764
- (4) Revised - Lighting Summary - Page 47 of 764
- (5) Revised - Structure Summary- Page 49 of 764
- (6) Revised - Pavement Rehab Tabulation Sheet - Pages 89-90 of 764
- (7) Revised - General Tabulation Sheet - Page 246 of 764
- (8) Revised - Lighting Summary - Page 373 of 764
- (9) Revised - Exit 6 Bulb Replacement Sheet - Page 381 of 764
- (10) Revised - Exit 7 Bulb Replacement Sheet - Page 384 of 764
- (11) Revised - Exit 28 Bulb Replacement Sheet - Page 387 of 764
- (12) Revised - Special Note for Liquidated Damages- Page 419 of 764
- (13) Added - Special Note for Ditching - Page 445(a) of 764
- (14) Revised - Title Sheet S1 - Page 478 of 764
- (15) Revised - Layout Sheet S3 - Page 481 of 764
- (16) Revised - Foundation Layout S5 - Page 483 of 764
- (17) Revised - Pier #1 S7 - Page 485 of 764
- (18) Revised - Pier #2 S8 - Page 486 of 764
- (19) Revised - Substructure B.O.R. - Page 488 of 764
- (20) Added - Conduit Barrier Retrofit Drawing - Page 487(a) of 764
- (21) Revised - Bridge 114B00053L Summary Sheet - Page 519 of 764
- (22) Revised - Bridge 114B00053R Summary Sheet - Page 525 of 764
- (23) Revised - Special Note - Pages 567-568 of 764
- (24) Revised - Material Summary - Pages 708-715 of 764
- (25) Revised - Proposal Bid Items - Pages 757-764(A) of 764



Proposal revisions are available at <http://transportation.ky.gov/Construction-Procurement/>.

If you have any questions, please contact us at 502-564-3500.

Sincerely,

A handwritten signature in black ink that reads "Rachel Mills". The signature is written in a cursive style with a large, looping "R" and "M".

Rachel Mills, P.E.  
Director  
Division of Construction Procurement

RM:mr  
Enclosures



**CALL NO. 200**

**CONTRACT ID. 181013**

**WARREN - BUTLER COUNTIES**

**FED/STATE PROJECT NUMBER 121GR18D013-NHPP**

**DESCRIPTION I-165 SPUR**

**WORK TYPE ASPHALT REHAB INTERSTATE/PARKWAY**

**PRIMARY COMPLETION DATE 6/30/2019**

**LETTING DATE: May 25,2018**

Sealed Bids will be received electronically through the Bid Express bidding service until 10:00 AM EASTERN DAYLIGHT TIME May 25,2018. Bids will be publicly announced at 10:00 AM EASTERN DAYLIGHT TIME.

**NO PLANS ASSOCIATED WITH THIS PROJECT.**

**DBE CERTIFICATION REQUIRED - 13%**

**REQUIRED BID PROPOSAL GUARANTY: Not less than 5% of the total bid.**

**ADMINISTRATIVE DISTRICT - 03**

**CONTRACT ID - 181013**

**121GR18D013-NHPP**

**COUNTY - BUTLER**

**PCN - DE01601651813**

**NHPP 0031(018)**

I-165 SPUR I-65 SPUR CORRIDOR; MODERNIZATION OF EXISTING NATCHER PARKWAY FROM BUTLER-WARREN COUNTY LINE MP 20.246 EXTENDING NORTH TO MP 37.143 IN WARREN COUNTY, A DISTANCE OF 018.20 MILES.ASPHALT REHAB INTERSTATE/PARKWAY SYP NO. 03-02042.10.

GEOGRAPHIC COORDINATES LATITUDE 37:12:17.00 LONGITUDE 86:42:13.00

**COUNTY - WARREN**

**PCN - DE11401651813**

**NHPP 0031(018)**

I-165 SPUR I-65 SPUR CORRIDOR; MODERNIZATION OF EXISTING NATCHER PARKWAY FROM I-65 INTERCHANGE MP 2.079 EXTENDING NORTH TO WARREN-BUTLER COUNTY LINE MP 20.246, A DISTANCE OF 016.90 MILES.ASPHALT REHAB INTERSTATE/PARKWAY SYP NO. 03-02042.10.

GEOGRAPHIC COORDINATES LATITUDE 37:00:48.00 LONGITUDE 86:30:56.00

**COMPLETION DATE(S):**

COMPLETED BY 11/15/2018

COMPLETED BY 06/30/2019

SEE SPECIAL NOTE FOR  
INTERMEDIATE ITEMS OF WORK

APPLIES TO ENTIRE CONTRACT



I-165 CONVERSION  
KYTC - DISTRICT 3  
MP 2.079 TO MP 37.2  
ITEM NO. 3-2042

# DISTRICT 3 GENERAL SUMMARY

ITEM NUMBER	ITEM	UNIT	WARREN COUNTY				BUTLER COUNTY				DISTRICT 3 TOTAL	
			WARREN CORRIDOR	EXIT 6	EXIT 7	WARREN SUBTOTAL	BUTLER CORRIDOR	REHAB MP 34.8-37.1	EXIT 28	EXIT 29		BUTLER SUBTOTAL
00078	CRUSHED AGGREGATE SIZE NO 2	TON		8	2	10		30		30		40
00212	CL2 ASPH BASE 1.00D PG64-22	TON		293	293	586		381		381		967
00461	CULVERT PIPE-15 IN	LF		7	22	29						29
00462	CULVERT PIPE-18 IN	LF		121	6	127						127
00521	STORM SEWER PIPE-15 IN	LF		9		9						9
00522	STORM SEWER PIPE-18 IN	LF							45			45
01000	PERFORATED PIPE-4 IN	LF		2150	300	2450						2450
01005	PERFORATED PIPE EDGE DRAIN-4 IN	LF					49146					49146
01010	NON-PERFORATED PIPE-4 IN	LF		48	24	72		1566				1638
01015	INSPECT & CERTIFY EDGE DRAINS	LS										1
01020	PERF PIPE HEADWALL TY 1-4 IN	EACH		4		4						4
01028	PERF PIPE HEADWALL TY 3-4 IN	EACH		4	2	6		200				206
01202	PIPE CULVERT HEADWALL-15 IN	EACH		1	1	2						2
01204	PIPE CULVERT HEADWALL-18 IN	EACH		1		1						1
01208	PIPE CULVERT HEADWALL-24 IN	EACH		1		1						1
01310	REMOVE PIPE	LF		18	6	24		2400				2425
01371	METAL END SECTION TY1-18IN	EACH						2				2
01381	METAL END SECTION TY2-18IN	EACH						1				1
01450	S & F BOX INLET-OUTLET-18 IN	EACH		5	1	6						7
01480	CURB BOX INLET TYPE B	EACH		1		1						1
01541	DROP BOX INLET TYPE 10	EACH		1		1						1
01559	DROP BOX INLET TYPE 13G	EACH										1
01584	CAP DROP BOX INLET	EACH		1		1						1
01690	FLUME INLET TYPE 1	EACH		3		4						6
01691	FLUME INLET TYPE 2	EACH		7		7						19
01718	REMOVE INLET	EACH						12				13
01740	CORED HOLE DRAINAGE BOX CON-4 IN	EACH						4				4
01890	ISLAND HEADER CURB TYPE 1	LF		300	150	600		225		75		1200
01904	REMOVE CURB	LF						7055				7055
01982	DELINEATOR FOR GUARDRAIL M/W	EACH		356	82	528		490		113		904
01983	DELINEATOR FOR GUARDRAIL M/Y	EACH		2	10	32		10		48		58
01984	DELINEATOR FOR BARRIER - WHITE	EACH		16	69	156		16		30		114
01985	DELINEATOR FOR BARRIER - YELLOW	EACH		6	24	56		6				74
02003	RELOCATE TEMP CONC BARRIER	LF		3520	6520	10040		3360		2920		6280
02014	BARRICADE-TYPE III	EACH		8	2	10		2		2		16
02107	BREAKING AND SEATING	SOYD						70934				70934
02159	TEMP DITCH	LF		5543	1905	9383		5680		1125		12260
02160	CLEAN TEMP DITCH	LF		2771	953	4692		2840		563		6131
02165	REMOVE PAVED DITCH	SOYD						2219				2219
02200	ROADWAY EXCAVATION	CUYD		13164	544	16241		2677		829		4991
02223	GRANULAR EMBANKMENT	CUYD		100		100		100				100
02230	EMBANKMENT IN PLACE	CUYD		4927	4718	9645		18662		4080		23042
02237	DITCHING	LF								4740		18040
02242	WATER	MGAL		2000		2000		2000				2000
02352	GUARDRAIL-STEEL W BEAM-D FACE	LF						1175				1175
02363	GUARDRAIL CONNECTOR TO BRIDGE END TY A	EACH		8	4	16		8		2		15
02365	CRASH CUSHION TYPE IX-A	EACH		4	2	6		3				3

I-165 CONVERSION  
KYTC - DISTRICT 3  
MP 2.079 TO MP 37.2  
ITEM NO. 3-2042

## DISTRICT 3 GENERAL SUMMARY

ITEM NUMBER	ITEM	UNIT	WARREN COUNTY				BUTLER COUNTY				DISTRICT 3 TOTAL
			WARREN CORRIDOR	EXIT 6	EXIT 7	WARREN SUBTOTAL	BUTLER CORRIDOR	REHAB MP 34.8-37.1	EXIT 28	EXIT 29	
02367	GUARDRAIL END TREATMENT TYPE 1	EACH	1	2	2	5	3	5	8	13	
02369	GUARDRAIL END TREATMENT TYPE 2A	EACH	15	3	3	21	27	9	41	62	
02373	GUARDRAIL END TREATMENT TYPE 3	EACH						3	3	3	
02381	REMOVE GUARDRAIL	LF	112.5	5258	4535	9905	150	16125	16275.0	26180	
02383	REMOVE & RESET GUARDRAIL	LF	18237.5	100		18337.5	23262.5	5987.5	29250.0	47587.5	
02387	GUARDRAIL CONNECTOR TO BRIDGE END TY A-1	EACH	2	4	2	8	3	2	5	13	
02396	REMOVE GUARDRAIL END TREATMENT	EACH						17	17	17	
02469	CLEAN SINKHOLE	EACH	2			2	2		2	4	
02483	CHANNEL LINING CLASS II	TON	180	18	6	204	234	2085	2528	2732	
02545	CLEARING AND GRUBBING	LS				1	1		1	2	
02562	TEMPORARY SIGNS	SQFT	872	640	512	2024	872	512	1768	3792	
02565	OBJECT MARKER TYPE 2	EACH	32			32	10		10	42	
02568	MOBILIZATION	LS								1	
02569	DEMOLITION	LS								1	
02596	FABRIC-GEOTEXTILE TYPE I	SOYD	288	29	10	327	375	3344	4054	1	
02599	FABRIC-GEOTEXTILE TYPE IV	SOYD	200			200	200	6199	6399	6599	
02600	FABRIC GEOTEXTILE TY IV FOR PIPE	SOYD		233	41	274				274	
02625	REMOVE HEADWALL	EACH						10	11	11	
02650	MAINTAIN & CONTROL TRAFFIC	LS	1	1	1	3	1	1	4	7	
02671	PORTABLE CHANGEABLE MESSAGE SIGN	EACH	5			5	3		3	8	
02676	MOBILIZATION FOR MILL & TEXT	LS	1			1			1	2	
02678	SCARIFYING PAVEMENT	SOYD						36712	36712	36712	
02690	SAFEOLOADING	CUYD							2	2	
02696	SHOULDER RUMBLE STRIPS	LF		3800	3850	7650	5680	52746	55021	62671	
02701	TEMP SILT FENCE	LF	5543	1905	1935	9383	4	5280	12260	21643	
02703	SILT TRAP TYPE A	EACH	3	6	4	13	4	3	10	23	
02704	SILT TRAP TYPE B	EACH	3	6	4	13	4	3	10	23	
02705	SILT TRAP TYPE C	EACH	3	6	4	13	4	3	10	23	
02706	CLEAN SILT TRAP TYPE A	EACH	3	6	4	13	4	3	10	23	
02707	CLEAN SILT TRAP TYPE B	EACH	3	6	4	13	4	3	10	23	
02708	CLEAN SILT TRAP TYPE C	EACH	3	6	4	13	4	3	10	23	
02714	SHOULDERING	LF		3776	3835	7611		2277	2277	9888	
02726	STAKING	LS				1			1	2	
02775	ARROW PANEL	EACH	3			3	3		3	6	
02898	RELOCATE CRASH CUSHION	EACH					4	3	9	9	
02929	CRASH CUSHION TYPE IX	EACH						1	1	1	
03171	CONCRETE BARRIER WALL TYPE 9T	LF	840	2900	60	3800	940	3360	4300	8100	
03262	CLEAN PIPE STRUCTURE	EACH						3	4	4	
04700	POLE 30 FT MTG HT	EACH	36			36			1	36	
04701	POLE 40 FT MTG HT	EACH						1	1	1	
04720	BRACKET 4 FT	EACH	3			3			3	3	
04721	BRACKET 6 FT	EACH	2			2			2	2	
04724	BRACKET 12 FT	EACH	27			27			27	27	
04725	BRACKET 15 FT	EACH	4			4			4	4	
04740	POLE BASE	EACH	35			35			35	36	
04750	TRANSFORMER BASE	EACH	35			35			35	36	
04793	CONDUIT-1 1/4 IN	LF	7910			7910			515	8425	

I-165 CONVERSION  
KYTC - DISTRICT 3  
MP 2.079 TO MP 37.2  
ITEM NO. 3-2042

# DISTRICT 3 GENERAL SUMMARY

ITEM NUMBER	ITEM	UNIT	WARREN COUNTY				BUTLER COUNTY				DISTRICT 3 TOTAL		
			WARREN CORRIDOR	EXIT 6	EXIT 7	WARREN SUBTOTAL	BUTLER CORRIDOR	REHAB MP 34.8-37.1	EXIT 28	EXIT 29		BUTLER SUBTOTAL	
04820	TRENCHING AND BACKFILLING	LF	7795			7795	515					515	8310
04833	WIRE-NO. 8	LF					1030					1030	1030
04834	WIRE-NO. 6	LF	15820			15820							15820
05950	EROSION CONTROL BLANKET	SQYD	14126	24280	18441	56847	16941	10325	6947	716		34929	91776
05952	TEMP MULCH	SQYD	9417	16187	12294	37898	11294	6884	4631	477		23286	61184
05953	TEMP SEEDING AND PROTECTION	SQYD	7063	12140	9221	28424	8471	5163	3473	358		17465	45889
05963	INITIAL FERTILIZER	TON	1.5	2.6	2	6.1	1.8	1.1	0.8	0.1		3.8	9.9
05964	20-10-10 FERTILIZER	TON	0.9	1.3	1	3.2	1	0.6	0.4	0.1		2.1	5.3
05985	SEEDING AND PROTECTION	SQYD						41701	6947			48648	48648
05992	AGRICULTURAL LIMESTONE	TON	9	16	12	37	11	6	5	1		23	60
06401	FLEXIBLE DELINEATOR POST-M/W	EACH						33	7			40	40
06404	FLEXIBLE DELINEATOR POST-M/Y	EACH						28	4			32	32
06511	PAVE STRIPING-TEMP PAINT-6 IN	LF	2000			2000		152000				152000	154000
06514	PAVE STRIPING-PERM PAINT-4 IN	LF		874	585	1459						1459	1459
06517	PAVE STRIPING-PERM PAINT-12 IN	LF		1214	1302	2516				999	455	1454	3970
06542	PAVE STRIPING-THERMO-6 IN W	LF	6700	6872	7938	21510	15928	32838	5515			54281	75791
06543	PAVE STRIPING-THERMO-6 IN Y	LF		2815	3533	6348		26501	2079			28580	34928
06546	PAVE STRIPING-THERMO-12 IN W	LF							999			999	999
06549	PAVE STRIPING-TEMP REM TAPE-B	LF	3300	1320	880	5500	2860	1540	440			4840	10340
06550	PAVE STRIPING-TEMP REM TAPE-W	LF	15800	23000	16600	55400	15800	14000	7000	500		37300	92700
06551	PAVE STRIPING-TEMP REM TAPE-Y	LF	12600	6400	3200	22200	10200	9000				19200	41400
06568	PAVE MARKING-THERMO STOP BAR-24IN	LF		40	56	96							96
08002	STRUCTURE EXCAV-SOLID ROCK	CUYD	5211			5211	13506					13506	18717
08903	CRASH CUSHION TY VI CLASS BT TL3	EACH	1	2	2	5	1	2				3	8
40024	ASPHALT PAVEMENT REMOVAL	SQYD						3334				3334	3334
10020NS	FUEL ADJUSTMENT	DOLL		4779	4576	9355		90711	3961			94672	104027
10030NS	ASPHALT ADJUSTMENT	DOLL		20497	21368	41865		220388	8554			228942	270807
20071EC	JOINT ADHESIVE	LF		3999	3407	7406		48044	2200	460		50704	58110
20366NN	REPLACE GRATE	EACH						2				2	2
20418ED	REMOVE & RELOCATE SIGNS	EACH							13			13	13
20597EC	DITCH EXCAVATION	CUYD							101			101	101
20391NS835	ELECTRICAL JUNCTION BOX TYPE A	EACH	11			11	1					1	12
20410ED	MAINTAIN LIGHTING	LS	3			3	1					1	4
20411ED	LAW ENFORCEMENT OFFICER	HOUR	1280			1280	1280					1280	2560
20432E5112	REMOVE CRASH CUSHION	EACH						4				4	4
20904ED	RECONSTRUCT CURB BOX INLET	EACH		4	2	6							6
21289ED	LONGITUDINAL EDGE KEY	LF								2275		2275	2275
21802EN	G/R STEEL W BEAM-S FACE (7 FT POST)	LF	237.5	4963	4325	9525.0	1100	14950	187.5			16237.5	25762.5
22883EN	CONCRETE WEDGE CURB	LF	10084	1000		11084	7930	7055				14985	26069
23011EN	CORRIGATED PIPE-18IN	LF						450				450	450
23148EN	END ANCHORS	EACH						3				3	3
23496EC	REMOVE MEDIAN TURN-AROUND (MP 3.6)	EACH	1			1		1				1	1
23496EC	REMOVE MEDIAN TURN-AROUND (MP 35.4)	EACH								7		7	36
24096EC	REMOVE AND RESET END TREATMENT	EACH	10	1		11	18					378	378
24489EC	INLAID PAVEMENT MARKER	EACH											
24589ED	LED LUMINAIRE	EACH	291			291	31					31	322
24605ED	RELOCATE MEDIAN TURN-AROUND (MP 9.9)	EACH	1			1							1







I-165 CONVERSION  
KYTC - DISTRICT 3  
MP 34.8 TO MP 37.2  
ITEM NO. 3-2042**PAVEMENT REHAB SECTION TABULATION**

ITEM CODE	ITEM	UNIT	TOTAL PROJECT	NOTES
00078	CRUSHED AGGREGATE SIZE NO 2	TON	30	
00212	CL2 ASPH BASE 1.00D PG64-22	TON	381	FROM MOT TABULATION
01000	PERFORATED PIPE-4 IN	LF	49146	FROM DRAINAGE TABULATION
01010	NON-PERFORATED PIPE-4 IN	LF	1566	
01028	PERF PIPE HEADWALL TY 3-4 IN	EACH	30	
01310	REMOVE PIPE	LF	2400	4" PERF PIPE
01371	METAL END SECTION TY 1-18IN	EACH	2	STD. DWG. RBR-030 & RBR-031
01381	METAL END SECTION TY 2-18IN	EACH	1	STD. DWG. RBR-030 & RBR-032
01480	CURB BOX INLET TYPE B	EACH	1	FROM DRAINAGE TABULATION
01690	FLUME INLET TYPE 1	EACH	3	FROM WEDGE CURB TABULATION
01691	FLUME INLET TYPE 2	EACH	9	FROM WEDGE CURB TABULATION
01718	REMOVE INLET	EACH	12	FROM WEDGE CURB TABULATION
01740	CORED HOLE DRAINAGE BOX CON-4 IN	EACH	4	
01890	ISLAND HEADER CURB TYPE 1	LF	225	
01904	REMOVE CURB	LF	7055	FROM WEDGE CURB TABULATION
01982	DELINEATOR FOR GUARDRAIL M/W	EACH	301	FROM GUARDRAIL TABULATION
01983	DELINEATOR FOR GUARDRAIL M/Y	EACH	48	FROM GUARDRAIL TABULATION
01984	DELINEATOR FOR BARRIER - WHITE	EACH	68	FROM MOT TABULATION
01985	DELINEATOR FOR BARRIER - YELLOW	EACH	68	FROM MOT TABULATION
02003	RELOCATE TEMP CONC BARRIER	LF	3360	FROM MOT TABULATION
02107	BREAKING AND SEATING	SQYD	70934	
02159	TEMP DITCH	LF	5280	FROM EROS CTRL TABULATION
02160	CLEAN TEMP DITCH	LF	2640	FROM EROS CTRL TABULATION
02165	REMOVE PAVED DITCH	SQYD	2219	FROM PAVED DITCH TABULATION
02200	ROADWAY EXCAVATION	CUYD	1485	
02230	EMBANKMENT IN PLACE	CUYD	300	
02237	DITCHING	LF	13300	
02352	GUARDRAIL-STEEL W BEAM-D FACE	LF	1175	
02363	GUARDRAIL CONNECTOR TO BRIDGE END TY A	EACH	5	FROM GUARDRAIL TABULATION
02365	CRASH CUSHION TYPE IX-A	EACH	3	
02367	GUARDRAIL END TREATMENT TYPE 1	EACH	5	FROM GUARDRAIL TABULATION
02369	GUARDRAIL END TREATMENT TYPE 2A	EACH	9	FROM GUARDRAIL TABULATION
02373	GUARDRAIL END TREATMENT TYPE 3	EACH	3	FROM GUARDRAIL TABULATION
02381	REMOVE GUARDRAIL	LF	16125	
02383	REMOVE & RESET GUARDRAIL	LF	0.0	FROM GUARDRAIL TABULATION
02387	GUARDRAIL CONNECTOR TO BRIDGE END TY A-1	EACH	2	FROM GUARDRAIL TABULATION
02396	REMOVE GUARDRAIL END TREATMENT	EACH	17	FROM GUARDRAIL TABULATION
02483	CHANNEL LINING CLASS II	TON	2085	*
02562	TEMPORARY SIGNS	SQFT	512	FROM MOT TABULATION
02596	FABRIC-GEOTEXTILE TYPE I	SQYD	3344	
02599	FABRIC-GEOTEXTILE TYPE IV	SQYD	6199	FROM PAVED DITCH TABULATION
02625	REMOVE HEADWALL	EACH	10	
02650	MAINTAIN & CONTROL TRAFFIC	LS	1	
02678	SCARIFYING PAVEMENT	SQYD	36712	
02696	SHOULDER RUMBLE STRIPS	LF	52746	
02701	TEMP SILT FENCE	LF	5280	FROM EROS CTRL TABULATION
02703	SILT TRAP TYPE A	EACH	3	FROM EROS CTRL TABULATION
02704	SILT TRAP TYPE B	EACH	3	FROM EROS CTRL TABULATION
02705	SILT TRAP TYPE C	EACH	3	FROM EROS CTRL TABULATION
02706	CLEAN SILT TRAP TYPE A	EACH	3	FROM EROS CTRL TABULATION
02707	CLEAN SILT TRAP TYPE B	EACH	3	FROM EROS CTRL TABULATION
02708	CLEAN SILT TRAP TYPE C	EACH	3	FROM EROS CTRL TABULATION
02898	RELOCATE CRASH CUSHION	EACH	3	FROM GUARDRAIL & MOT TABULATION
02929	CRASH CUSHION TYPE IX	EACH	1	FROM GUARDRAIL TABULATION
03171	CONCRETE BARRIER WALL TYPE 9T	LF	3360	FROM MOT TABULATION

I-165 CONVERSION  
KYTC - DISTRICT 3  
MP 34.8 TO MP 37.2  
ITEM NO. 3-2042

## PAVEMENT REHAB SECTION TABULATION

03262	CLEAN PIPE STRUCTURE	EACH	3	
05950	EROSION CONTROL BLANKET	SQYD	10325	FROM EROS CTRL TABULATION
05952	TEMP MULCH	SQYD	6884	FROM EROS CTRL TABULATION
05953	TEMP SEEDING AND PROTECTION	SQYD	5163	FROM EROS CTRL TABULATION
05963	INITIAL FERTILIZER	TON	1.1	FROM EROS CTRL TABULATION
05964	20-10-10 FERTILIZER	TON	0.6	FROM EROS CTRL TABULATION
05985	SEEDING AND PROTECTION	SQYD	41701	
05992	AGRICULTURAL LIMESTONE	TON	6	FROM EROS CTRL TABULATION
06401	FLEXIBLE DELINEATOR POST-M/W	EACH	33	
06404	FLEXIBLE DELINEATOR POST-M/Y	EACH	28	
06511	PAVE STRIPING-TEMP PAINT-6 IN	LF	152000	FROM MOT TABULATION
06542	PAVE STRIPING-THERMO-6 IN W	LF	32838	
06543	PAVE STRIPING-THERMO-6 IN Y	LF	26501	
06549	PAVE STRIPING-TEMP REM TAPE-B	LF	1540	FROM MOT TABULATION
06550	PAVE STRIPING-TEMP REM TAPE-W	LF	14000	FROM MOT TABULATION
06551	PAVE STRIPING-TEMP REM TAPE-Y	LF	9000	FROM MOT TABULATION
08903	CRASH CUSHION TY VI CLASS BT TL3	EACH	2	FROM MOT TABULATION
40024	ASPHALT PAVEMENT REMOVAL	SQYD	3334	
10020NS	FUEL ADJUSTMENT	DOLL	90711	
10030NS	ASPHALT ADJUSTMENT	DOLL	220388	
20071EC	JOINT ADHESIVE	LF	48044	
20366NN	REPLACE GRATE	EACH	2	FROM DRAINAGE TABULATION
21802EN	G/R STEEL W BEAM-S FACE (7 FT POST)	LF	14950	FROM GUARDRAIL TABULATION
23011EN	CORRIGATED PIPE-18IN	LF	450	STD. DWG. RBR-030 & RBR-031
23148EN	END ANCHORS	EACH	3	STD. DWG. RBR-030 & RBR-031
22883EN	CONCRETE WEDGE CURB	LF	7055	FROM WEDGE CURB TABULATION
24096EC	REMOVE AND RESET END TREATMENT	EACH	0	FROM GUARDRAIL TABULATION
24489EC	INLAID PAVEMENT MARKER	EACH	330	
20432ES112	REMOVE CRASH CUSHION	EACH	4	FROM GUARDRAIL TABULATION
24654ED	SINGLE SLOPE CONC BARRIER WALL @ GREEN RIVER BRIDGE	LF	200	
24980ED	ADJUST CRASH WALL HEIGHT @ EXIT 36 BRIDGE	LS	1	

NOTE: QUANTITIES INCLUDED IN DISTRICT 3 GENERAL SUMMARY

\* QUANTITIES INCLUDE BOTH THE QUANTITY FROM THE PAVED DITCH TABULATION AND FROM STD. DWG. RBR-030 AND RBR-031



I-165 CONVERSION  
KYTC - DISTRICT 3  
ITEM NO. 3-2042

# EXIT 28 GENERAL TABULATION SHEET

ITEM CODE	ITEM	UNIT	TOTAL PROJECT	NOTES
01890	ISLAND HEADER CURB TYPE 1	LF	75	
01982	DELINEATOR FOR GUARDRAIL M/W	EACH	113	FROM GUARDRAIL TABULATION
01984	DELINEATOR FOR BARRIER - WHITE	EACH	30	FROM MOT TABULATION
02003	RELOCATE TEMP CONC BARRIER	LF	2920	FROM MOT TABULATION
02014	BARRICADE-TYPE III	EACH	2	FROM MOT TABULATION
02159	TEMP DITCH	LF	1125	FROM EROS CTRL TABULATION
02160	CLEAN TEMP DITCH	LF	563	FROM EROS CTRL TABULATION
02200	ROADWAY EXCAVATION	CUYD	829	
02230	EMBANKMENT IN PLACE	CUYD	4080	
02237	DITCHING	LF	4740	
02363	GUARDRAIL CONNECTOR TO BRIDGE END TY A	EACH	2	FROM GUARDRAIL TABULATION
02369	GUARDRAIL END TREATMENT TYPE 2A	EACH	5	FROM GUARDRAIL TABULATION
02383	REMOVE & RESET GUARDRAIL	LF	5987.5	FROM GUARDRAIL TABULATION
02483	CHANNEL LINING CLASS II	TON	209	
02562	TEMPORARY SIGNS	SQFT	256	FROM MOT TABULATION
02596	FABRIC-GEOTEXTILE TYPE I	SQYD	335	
02650	MAINTAIN & CONTROL TRAFFIC	LS	1	FROM MOT TABULATION
02696	SHOULDER RUMBLE STRIPS	LF	2275	
02701	TEMP SILT FENCE	LF	1125	FROM EROS CTRL TABULATION
02703	SILT TRAP TYPE A	EACH	2	FROM EROS CTRL TABULATION
02704	SILT TRAP TYPE B	EACH	2	FROM EROS CTRL TABULATION
02705	SILT TRAP TYPE C	EACH	2	FROM EROS CTRL TABULATION
02706	CLEAN SILT TRAP TYPE A	EACH	2	FROM EROS CTRL TABULATION
02707	CLEAN SILT TRAP TYPE B	EACH	2	FROM EROS CTRL TABULATION
02708	CLEAN SILT TRAP TYPE C	EACH	2	FROM EROS CTRL TABULATION
02714	SHOULDERING	LF	2277	FROM SHOULDERING TABULATION
02898	RELOCATE CRASH CUSHION	EACH	2	FROM GUARDRAIL & MOT TABULATION
03262	CLEAN PIPE STRUCTURE	EACH	1	
05950	EROSION CONTROL BLANKET	SQYD	6947	FROM EROS CTRL TABULATION
05952	TEMP MULCH	SQYD	4631	FROM EROS CTRL TABULATION
05953	TEMP SEEDING AND PROTECTION	SQYD	3473	FROM EROS CTRL TABULATION
05963	INITIAL FERTILIZER	TON	0.8	FROM EROS CTRL TABULATION
05964	20-10-10 FERTILIZER	TON	0.4	FROM EROS CTRL TABULATION
05985	SEEDING AND PROTECTION	SQYD	6947	
05992	AGRICULTURAL LIMESTONE	TON	5	FROM EROS CTRL TABULATION
06401	FLEXIBLE DELINEATOR POST-M/W	EACH	7	
06404	FLEXIBLE DELINEATOR POST-M/Y	EACH	4	
06406	SBM ALUM SHEET SIGNS .080 IN	SQFT	6	
06542	PAVE STRIPING-THERMO-6 IN W	LF	5515	
06543	PAVE STRIPING-THERMO-6 IN Y	LF	2079	
06546	PAVE STRIPING-THERMO-12 IN W	LF	999	
06549	PAVE STRIPING-TEMP REM TAPE-B	LF	440	FROM MOT TABULATION
06550	PAVE STRIPING-TEMP REM TAPE-W	LF	7000	FROM MOT TABULATION
10020NS	FUEL ADJUSTMENT	DOLL	3961	
10030NS	ASPHALT ADJUSTMENT	DOLL	8554	
20071EC	JOINT ADHESIVE	LF	2200	
20418ED	REMOVE & RELOCATE SIGNS	EACH	13	
20597EC	DITCH EXCAVATION	CUYD	101	
21289ED	LONGITUDINAL EDGE KEY	LF	2275	
21802EN	G/R STEEL W BEAM-S FACE (7 FT POST)	LF	187.5	FROM GUARDRAIL TABULATION
24096EC	REMOVE AND RESET END TREATMENT	EACH	7	FROM GUARDRAIL TABULATION
24489EC	INLAID PAVEMENT MARKER	EACH	48	

NOTE: QUANTITIES INCLUDED IN DISTRICT 3 GENERAL SUMMARY

COUNTY OF	ITEM NO.
VARIOUS	3-2042.001

**ROADWAY LIGHTING ESTIMATE OF QUANTITIES**

**DISTRICT 3**

ITEM DESCRIPTION	CODE	UNITS	WARREN COUNTY			BUTLER COUNTY			DISTRICT 3		
			EXIT 2	EXIT 6	EXIT 7	WARREN CO. TOTALS	EXIT 28	TOTALS	WARREN CO. TOTALS	EXIT 28	TOTALS
POLE 30' MTG HT	4700	EACH	1	17	18	36	-	-	36	36	
POLE 40' MTG HT	4701	EACH	-	-	-	-	1	1	1	1	
BRACKET 4'	4720	EACH	-	2	1	3	-	-	3	3	
BRACKET 6'	4721	EACH	1	1	-	2	-	-	2	2	
BRACKET 12'	4724	EACH	-	12	15	27	-	-	27	27	
BRACKET 15'	4725	EACH	-	2	2	4	-	-	4	4	
POLE BASE	4740	EACH	-	17	18	35	-	-	35	35	
TRANSFORMER BASE	4750	EACH	-	17	18	35	-	-	35	35	
FUSED CONNECTOR KIT	4780	EACH	-	18	42	81	-	-	81	81	
CONDUIT - 1/4" INCH	4793	LF	-	3,780	4,130	7,910	515	515	8,425	8,425	
TRENCHING AND BACKFILLING	4820	LF	-	3,665	4,130	7,795	515	515	8,310	8,310	
WIRE - NO. 8	4833	LF	-	-	-	-	1,030	1,030	1,030	1,030	
WIRE - NO. 6	4834	LF	-	7,560	8,260	15,820	-	-	15,820	15,820	
ELECTRICAL JUNCTION BOX TYPE A	2039INS635	EACH	-	5	6	11	-	-	11	11	
MAINTAIN LIGHTING	2040ED	LS	1	1	1	3	-	-	3	3	
LED LUMINAIRE	24589ED	EACH	147	67	77	291	31	31	322	322	

**GENERAL NOTES**

THE STANDARD SPECIFICATIONS FOR ROAD AND BRIDGE CONSTRUCTION, CURRENT EDITION, AND OTHER SPECIAL NOTES AND SPECIFICATIONS WILL APPLY ON THIS PROJECT. SEE SECTION 716 FOR MEASUREMENT AND OTHER DETAILS. SEE SECTION 602 FOR SPIRAL REINFORCEMENT SPLICING.

THE CONTRACTOR SHALL MAKE AN INSPECTION OF THE PROJECT SITE PRIOR TO SUBMITTING A BID AND SHALL BE THOROUGHLY FAMILIARIZED WITH EXISTING CONDITIONS. SUBMISSIONS OF A BID WILL BE CONSIDERED AN AFFIRMATION OF THIS INSPECTION HAVING BEEN COMPLETED.

FOR MAINTAIN LIGHTING, THE CONTRACTOR SHALL MAINTAIN THE EXISTING ILLUMINANCE LEVELS ON THE ROADWAYS, RAMPS, ETC. THROUGHOUT THE CONSTRUCTION PROCESS. CONTRACTOR SHALL PREPARE AND PROVIDE A LIGHTING PLAN SHOWING HOW THEY WILL ACHIEVE THIS. THIS CAN BE A COMBINATION OF MAINTAINING THE EXISTING LIGHTING, PROVIDING TEMPORARY LIGHTING, AND/OR INSTALLATION OF THE NEW LIGHTING SYSTEM. THE PROPOSED LIGHTING LAYOUT DESIGN SHALL BE SUBMITTED FOR APPROVAL TO THE DIVISION OF TRAFFIC, FRANKFORT, KY 1502-564-3020 PRIOR TO THE BEGINNING OF ROAD OR BRIDGE CONSTRUCTION.

ALL UNDERGROUND CONDUIT SHALL BE 2" RIGID STEEL UNLESS OTHERWISE SPECIFIED. JUNCTION BOXES, CONDUITS AND ROAD CROSSING LOCATIONS ARE SCHEMATIC ONLY. EXACT LOCATIONS SHALL BE APPROVED BY THE ENGINEER AND DEDICATED ON THE AS-BUILT PLANS. ALL CONDUITS SHALL BE ACCESSIBLE INSIDE JUNCTION BOXES. ANY DUCTED CABLE SHALL RUN THROUGH 3" RS CONDUIT UNDER THE ROADWAY WITH ONLY ONE DUCTED CABLE PER CONDUIT PERMITTED. ALL SPARE CONDUITS SHALL BE CAPPED ON BOTH ENDS AS SHOWN ON JUNCTION BOX DETAIL. THERE SHALL BE NO OPEN CUTTING OF ROADWAY UNLESS APPROVED BY ENGINEER.

JUNCTION BOXES SHALL BE PLACED IN LOCATIONS TO AVOID STANDING WATER AND DITCH LINES. ANY ADDITIONAL JUNCTION BOXES SHALL BE APPROVED BY THE ENGINEER.

ALL CABLE/WIRE RUNS SHALL BE SPLICE-FREE FROM THE CONTROLLER TO EACH POLE THE CABLE/WIRE IS FEEDING. ALL CABLES SHALL BE PERMANENTLY LABELED INSIDE POLE BASES, CABINETS AND JUNCTION BOXES WITH CIRCUIT NUMBERS.

REGARDLESS OF THE NORTHING & EASTING NOTED, ALL POLES LOCATED BEHIND GUARDRAIL MUST BE A MINIMUM OF 5 FEET BEHIND THE FACE OF THE GUARDRAIL.

ALL EXPOSED CONDUIT MUST BE SECURED IN PLACE ACCORDING TO THE NATIONAL ELECTRIC CODE WITH CONDUIT STRAPS/OR METHODS AS APPROVED BY THE ENGINEER.

ALL SPLICES NOTED ON THIS PLAN SHALL BE APPROVED BY CENTRAL OFFICE TRAFFIC OPERATIONS. THESE SPLICES SHALL BE WATERPROOF AND SHALL BE OF THE CORRECT SIZE FOR THE WIRE USED AND SHALL BE RAYCHEM GTAP-2(B18), OR APPROVED EQUAL. ALL SPLICES SHALL BE INCIDENTAL TO THE WIRE AND CABLE BEING INSTALLED.

UPON COMPLETION OF THE PROJECT AND AN INSPECTION WILL BE CARRIED OUT AFTER THE LIGHTING IS FUNCTIONAL TO VERIFY PROPER ILLUMINATION, OTHER OPERATIONAL FEATURES, AND AN INSULATION TEST OF ALL WIRING AS WELL AS GROUNDING RESISTANCE. ALL ROADWAY LIGHTING CIRCUITS MUST PASS AN INSULATION TEST OF 100 MILLION OHMS TO GROUND. GROUND RODS SHALL HAVE A RESISTANCE TO GROUND NOT TO EXCEED 25 OHMS. IF GROUND RESISTANCE EXCEEDS 25 OHMS, THERE SHALL BE TWO OR MORE GROUND RODS CONNECTED IN PARALLEL UNTIL IT MEETS THIS VALUE.



COUNTY OF	WARREN
ITEM NO.	3-2040000

ITEM CODE	ITEM	UNIT	SHEET TOTALS
4700	POLE 30' MTC HT	EACH	17
4720	BRACKET 4'	EACH	2
4721	BRACKET 6'	EACH	1
4724	BRACKET 12'	EACH	12
4725	BRACKET 15'	EACH	2
4740	POLE BASE	EACH	17
4750	TRANSFORMER BASE	EACH	17
4780	FUSED CONNECTOR KIT	EACH	39
4793	CONDUIT - 1/4" INCH	LF	3,780
4820	TRENCHING AND BACKFILLING	LF	3,665
4834	WIRE - NO. 6	LF	7,560
2039INSR35	ELECTRICAL JUNCTION BOX TYPE A	EACH	5
2040IED	MAINTAIN LIGHTING	LS	1
24589ED	LED LUMINAIRE	EACH	67

POLE	COORDINATES	ALIGNMENT
4-7-A-12	N 3503653.624 E 4707299.180	US 31W

EXISTING LIGHTING CONTROL CENTER AND POWER SOURCE. WARREN RECC PROVIDES 240/480 VOLT SINGLE PHASE SECONDARY.

CKT 4 2 - #6 IN 1/4" INCH RS CONDUIT

CKT 4 2 - #6 IN PROPOSED 1 1/4" INCH RS CONDUIT IN BRIDGE BARRIER WALL

DESIGN CRITERIA FOR LED LIGHTING @ EXIT 6  
 OVERALL ILLUMINANCE (FO)  
 AVERAGE: 1.08  
 MAXIMUM: 4.9  
 MINIMUM: 0.1  
 AVG/MIN: 10.80

**LED LUMINAIRE DESIGNATION**

4 - 18 - A - 12 - 8

- \* DISTANCE FROM RIGHT EDGE OF DRIVING LANE TO CENTER OF POLE BASE
- \* PROPOSED ARM LENGTH
- LUMINAIRE WATTAGE
- LUMINAIRE NUMBER IN CIRCUIT
- CIRCUIT NUMBER

NOTE:  
 ALL TYPE A LED LUMINAIRES SHALL BE NO MORE THAN 158 WATTS AND IES TYPE III.  
 ALL TYPE B LED LUMINAIRES SHALL BE NO MORE THAN 173 WATTS AND IES TYPE III.

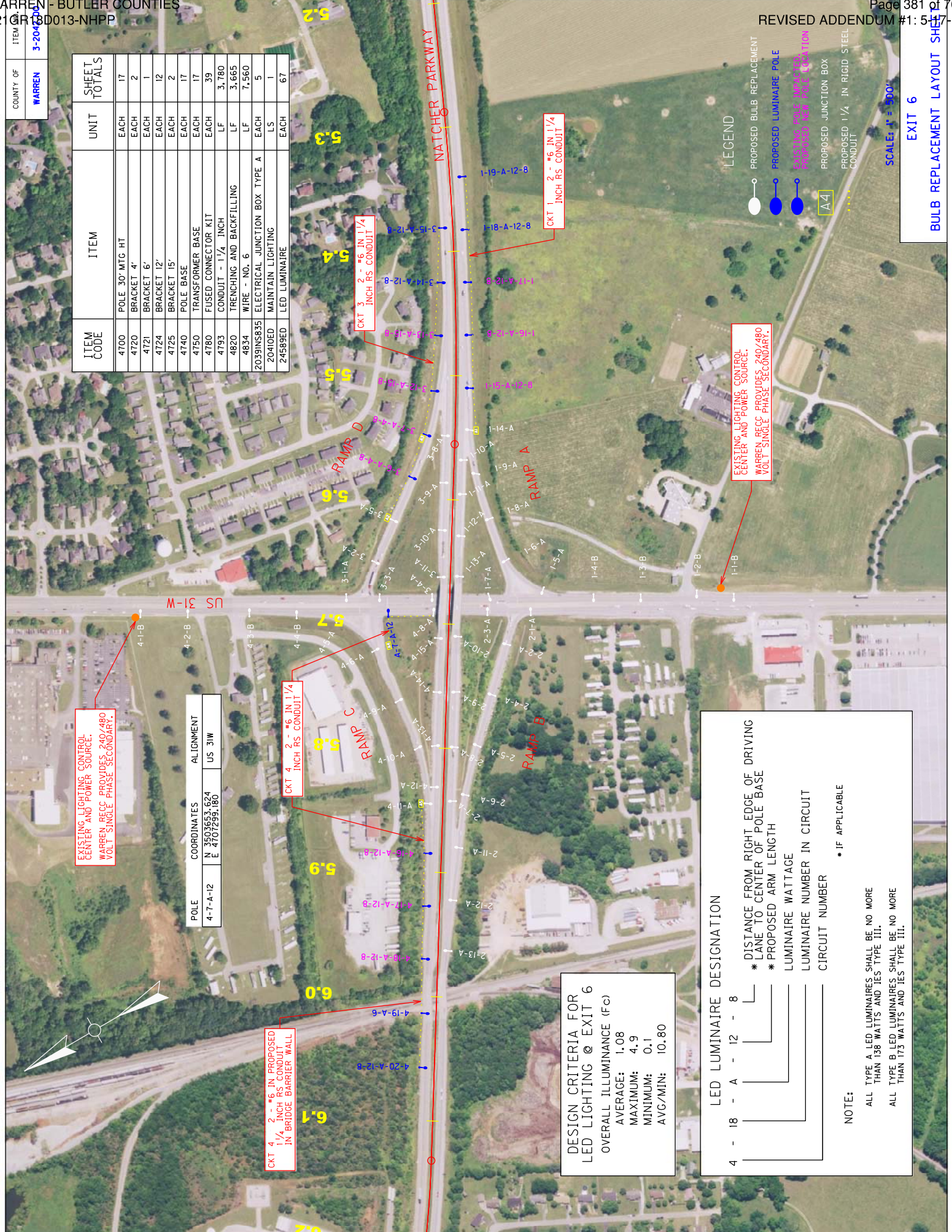
\* IF APPLICABLE

**LEGEND**

- PROPOSED BULB REPLACEMENT
- PROPOSED LUMINAIRE POLE
- EXISTING POLE (MAINTAINED)
- PROPOSED NEW POLE LOCATION
- PROPOSED JUNCTION BOX
- PROPOSED 1/4" IN RIGID STEEL CONDUIT

SCALE: 1" = 500'

EXIT 6  
 BULB REPLACEMENT LAYOUT SHEET

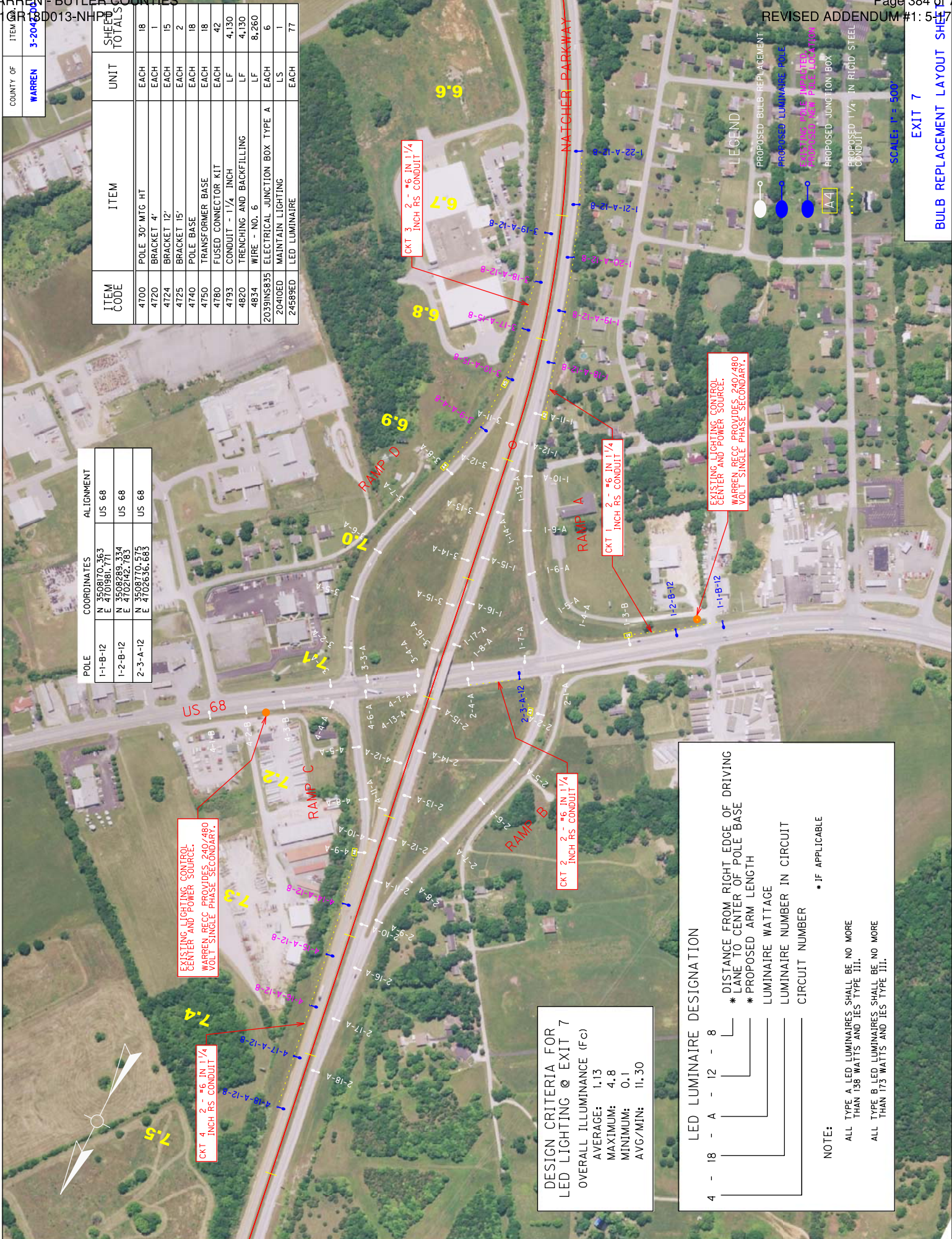




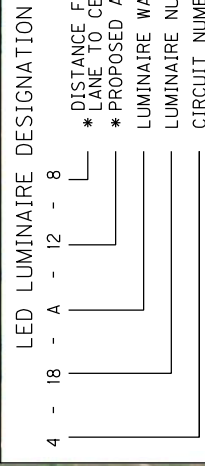
ITEM	COUNTY OF
3-204	WARREN

ITEM CODE	ITEM	UNIT	SHEET TOTALS
4700	POLE 30' MTG HT	EACH	18
4720	BRACKET 4'	EACH	1
4724	BRACKET 12'	EACH	15
4725	BRACKET 15'	EACH	2
4740	POLE BASE	EACH	18
4750	TRANSFORMER BASE	EACH	18
4780	FUSED CONNECTOR KIT	EACH	42
4793	CONDUIT - 1/4" INCH	LF	4,130
4820	TRENCHING AND BACKFILLING	LF	4,130
4834	WIRE - NO. 6	LF	8,260
2039INS835	ELECTRICAL JUNCTION BOX TYPE A	EACH	6
2040ED	MAINTAIN LIGHTING	LS	1
24589ED	LED LUMINAIRE	EACH	77

POLE	COORDINATES	ALIGNMENT
1-1-B-12	N 3508170.363 E 4701981.771	US 68
1-2-B-12	N 3508289.334 E 4702142.783	US 68
2-3-A-12	N 3508170.575 E 4702636.683	US 68



**DESIGN CRITERIA FOR LED LIGHTING @ EXIT 7**  
 OVERALL ILLUMINANCE (Fc)  
 AVERAGE: 1.13  
 MAXIMUM: 4.8  
 MINIMUM: 0.1  
 AVG/MIN: 11.30



**NOTE:**  
 ALL TYPE A LED LUMINAIRES SHALL BE NO MORE THAN 138 WATTS AND IES TYPE III.  
 ALL TYPE B LED LUMINAIRES SHALL BE NO MORE THAN 175 WATTS AND IES TYPE III.

**EXISTING LIGHTING CONTROL CENTER AND POWER SOURCE. WARREN RECC PROVIDES 240/480 VOLT SINGLE PHASE SECONDARY.**

**EXISTING LIGHTING CONTROL CENTER AND POWER SOURCE. WARREN RECC PROVIDES 240/480 VOLT SINGLE PHASE SECONDARY.**

**DESIGN CRITERIA FOR LED LIGHTING @ EXIT 7**  
 OVERALL ILLUMINANCE (Fc)  
 AVERAGE: 1.13  
 MAXIMUM: 4.8  
 MINIMUM: 0.1  
 AVG/MIN: 11.30

**NOTE:**  
 ALL TYPE A LED LUMINAIRES SHALL BE NO MORE THAN 138 WATTS AND IES TYPE III.  
 ALL TYPE B LED LUMINAIRES SHALL BE NO MORE THAN 175 WATTS AND IES TYPE III.



COUNTY OF	BUTLER
ITEM NO.	3-2044000

ITEM CODE	ITEM	UNIT	SHEET TOTALS
4701	POLE 40' MTC HT	EACH	1
4725	BRACKET 15'	EACH	1
4740	POLE BASE	EACH	1
4750	TRANSFORMER BASE	EACH	1
4780	FUSED CONNECTOR KIT	EACH	3
4793	CONDUIT - 1 1/4" INCH	LF	515
4820	TRENCHING AND BACKFILLING	LF	515
4833	WIRE - NO. 8	LF	1,030
2039INS835	ELECTRICAL JUNCTION BOX TYPE A	EACH	1
2040ED	MAINTAIN LIGHTING	LS	1
24589ED	LED LUMINAIRE	EACH	31

- LEGEND**
- PROPOSED BULB REPLACEMENT
  - PROPOSED LUMINAIRE POLE
  - PROPOSED JUNCTION BOX
  - PROPOSED 1 1/4" IN RIGID STEEL CONDUIT

EXISTING LIGHTING CONTROL CENTER AND POWER SOURCE. 480 VOLT ELECTRIC SERVICE.

**DESIGN CRITERIA FOR LED LIGHTING @ EXIT 28**  
 OVERALL ILLUMINANCE (Fc)  
 AVERAGE: 0.93  
 MAXIMUM: 2.8  
 MINIMUM: 0.1  
 AVG/MIN: 9.30

**LED LUMINAIRE DESIGNATION**

1 - 16 - B - 15

\* PROPOSED ARM LENGTH  
 LUMINAIRE WATTAGE  
 LUMINAIRE NUMBER IN CIRCUIT  
 CIRCUIT NUMBER

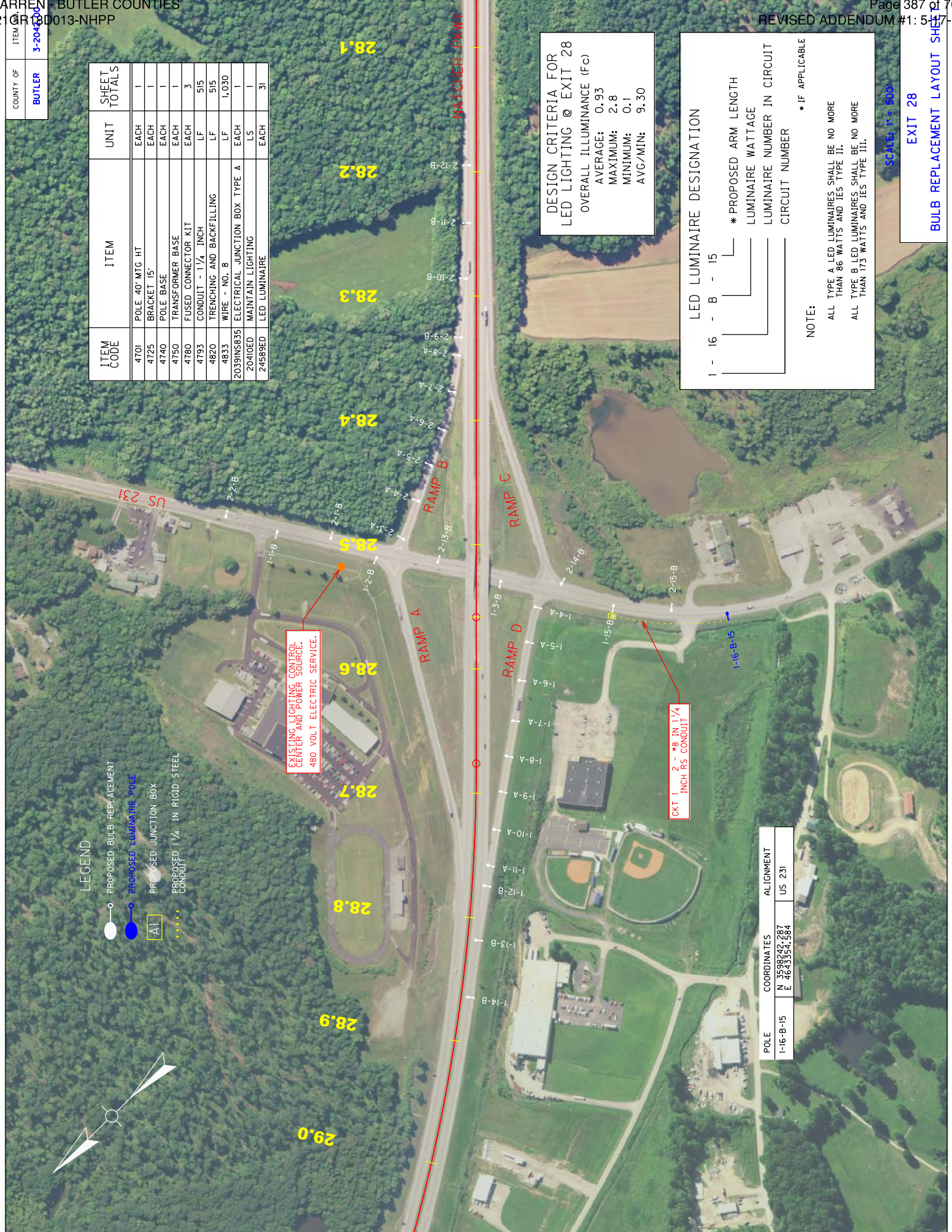
**NOTE:**  
 \* IF APPLICABLE  
 ALL TYPE A LED LUMINAIRES SHALL BE NO MORE THAN 86 WATTS AND IES TYPE II.  
 ALL TYPE B LED LUMINAIRES SHALL BE NO MORE THAN 173 WATTS AND IES TYPE III.

POLE	COORDINATES	ALIGNMENT
1-16-B-15	N 3598242.287 E 4633554.684	US 231

SCALE: 1" = 500'

EXIT 28

BULB REPLACEMENT LAYOUT SHEET



**SPECIAL NOTE FOR PROJECT COMPLETION AND LIQUIDATED DAMAGES**

**NATCHER PARKWAY – I165 CONVERSION  
WARREN AND BUTLER COUNTIES  
ITEM NO. 3-2042**

The specified date of completion for this project will be June 30, 2019.

A specified intermediate date of completion of November 15, 2018, applies to the longitudinal edge drains, bridge stabilization transitions, vertical clearance corrections, driving lane patching, and shoulder patching, minus any application of final asphalt surface.

Completion of all other items in the contract and asphalt surface paving will be required by June 30, 2019. Liquidated damages, in the amount specified in Section 108.09 of the Standard Specifications, will be assessed for each day work is not complete after June 30, 2019 regardless of seasonal or weather limitations. Liquidated damages for failure to complete all items of work before June 30, 2019 will be charged concurrently and in addition to any other liquidated damage or penalty assessed on the project.

### **SPECIAL NOTE FOR DITCHING**

Contrary to section 209.04.04 in the Standard Specifications, the Department will measure and pay for cleaning out pipe structures 36 inches or less in diameter. A quantity for clearing out pipe structures 36 inches or less in diameter has been included in the plans for bidding purposes only. Reshaping any deformed ends on metal end entrance pipes and disposing of unsuitable entrance pipes will still be considered incidental to Ditching.



**INDEX OF SHEETS**

Sheet No.	Title Sheet	Description
S1	General Notes	General Notes
S2	General Notes	General Notes
S3	Layout	Layout
S4	Sounding Layout	Sounding Layout
S5	Foundation Layout	Foundation Layout
S6	End Bent #1	End Bent #1
S7	Pier #1	Pier #1
S8	Pier #2	Pier #2
S9	End Bent #2	End Bent #2
S10	Substructure - Bill of Reinforcement	Substructure - Bill of Reinforcement
S11	Forming Plan	Forming Plan
S12	Forming Details	Forming Details
S13	Beam Sheet, IN6C-49	Beam Sheet, IN6C-49
S14	Superstructure	Superstructure
S15	Superstructure End Bent #1	Superstructure End Bent #1
S16	Superstructure End Bent #2	Superstructure End Bent #2
S17	Substructure - Bill of Reinforcement	Substructure - Bill of Reinforcement
S18	Construction Elevations	Construction Elevations
S19	Construction Elevations	Construction Elevations

**SPECIAL NOTES**  
Special Note For Drilled Shafts

**SPECIAL PROVISIONS**  
69 Embankment at Bridge End Bent Structures

**STANDARD DRAWINGS**  
 RBP-001-12 E lastomer to Bearing Pads for Prestressed Beams  
 RBP-002-04 Steel Joist for Structures  
 RBP-003-04 Bridge Reinforcement and Waterproofing  
 RBP-004-03 Geotechnical Legend  
 RBP-005-03 Non Expansion Joints and Armored Edges  
 RBP-006-03 RFI Log System Type 1  
 RBP-007-03 Treatment of Embankments at End Bents  
 RBP-008-03 Treatment of Embankments at End Bents

**SPECIFICATIONS**  
 2012 Standard Specifications for Road and Bridge Construction.  
 2010 AASHTO LRFD Bridge Design Specifications with Current Interims.

**COMMUNICABILITY OF KENTUCKY**  
 DEPARTMENT OF HIGHWAYS  
 WARREN  
 ROUTE 165 SPUR  
 CSXT RAILROAD  
 TITLE SHEET  
 5-9-2018

REVISION DATE  
 DATE: 04-24-2018 CHECKED BY: J. MILES  
 DESIGNED BY: J. JONES  
 DETAILED BY: J. JONES  
 J. MILES

PROJECT NO. 200  
 SHEET NO. 08249

PREPARED BY: AMERICAN ENGINEERS, INC.  
 2500 Indian  
 Louisville, KY 40218  
 (502) 262-3812  
 WWW.AEI-PC.COM

# TRANSPORTATION CABINET DEPARTMENT OF HIGHWAYS

## WARREN COUNTY I-65 SPUR OVER CSXT RAILROAD STA. 316 + 92.46

### ESTIMATE OF QUANTITIES

BID ITEM CODE	UNIT	CONCRETE CLASS "A"	STEEL REINFORCEMENT	STEEL REINFORCEMENT EPOXY COATED	STRUCTURE ELEVATION	REINFORCED CONCRETE	SLOPE WALL 6 IN	STRUCTURE GRANULAR BACKFILL	MASONRY CONCRETE	PILES - STEEL HP 12 X 53	Pile Points 12 IN	TEST PILES	ARMORED EDGE FOR CONCRETE	RAIL SYSTEM TYPE 3	DILLED SHAFT 54 IN COMMON	DILLED SHAFT 48 IN	PARTIAL DEPTH ROCK PATCHING	BRIDGE CHAIN LINK FENCE - 7 FT	CONCRETE OVERLAY - LATEX	MACHINE PREP OF SLAB	CONC. CLASS M FULL DEPTH PATCH	EPOXY SAND	PPC L-BEAM TYPE HN42-49	BLAST REMOVE CONCRETE MASONRY	ROCK SOUNDINGS	ROCK COINGS	CONDUCT 1/2 IN			
END BENT #1		19.6	12.1	1381	865	68.8	84.7	37.8	9.4	134	4	48	32	195	19.7	10.0	4	780	46	1381	3	80	375	1421	39.5	20	11	210		
PIER #1		80.7	1.9	4384	17	23.5		22.1							25.2	10.0														
PIER #2		80.3	1.9	4322	17	23.5		22.1							25.2	10.0														
END BENT #2		19.7	11.9	1370	877	63.2	85.1	40.3	9.7	121	4	44	32	195	44.9	20.0	4	780	46	1381	3	80	375	1421	54.5	40	22	210		
<b>Substructure</b>		<b>89.9</b>		<b>25008</b>					<b>156.7</b>				<b>32</b>	<b>195</b>			<b>4</b>	<b>780</b>	<b>46</b>	<b>1381</b>	<b>3</b>	<b>80</b>	<b>375</b>	<b>1421</b>	<b>39.5</b>			<b>210</b>		
<b>BRIDGE TOTALS</b>		<b>200.3</b>	<b>117.7</b>	<b>11457</b>	<b>27688</b>	<b>185.0</b>	<b>169.8</b>	<b>78.1</b>	<b>220.0</b>	<b>255</b>	<b>8</b>	<b>92</b>	<b>32</b>	<b>195</b>	<b>44.9</b>	<b>20.0</b>	<b>4</b>	<b>780</b>	<b>46</b>	<b>1381</b>	<b>3</b>	<b>80</b>	<b>375</b>	<b>1421</b>	<b>54.5</b>	<b>40</b>	<b>22</b>	<b>210</b>		

USFR: Joan-c DATE PLOT: 03 May 17, 2018  
 FILE NAME: C:\P1\N\IN\CSX BRIDGE\58269.001.DGN  
 LETTING DATE  
 CONSTRUCTION PROJECT NO.  
 ITEM NUMBER 3-2042.10





**Definitions of Terms**

PILE CUT-OFF ELEVATION: ELEVATION OF THE TOP OF PILE IN THE FINISHED STRUCTURE.  
PILE LENGTH IN PLACE: ACTUAL PILE LENGTH BELOW THE PILE CUT-OFF ELEVATION IN THE FINISHED STRUCTURE.  
POINT OF PILE ELEVATION AS DRIVEN: ACTUAL POINT OF PILE ELEVATION FROM STRUCTURAL DESIGN DESIGN AXIAL LOAD, LOAD CARRIED BY EACH PILE AS ESTIMATED FROM STRUCTURAL DESIGN CALCULATIONS FOR FACTORED LOADS.  
PRACTICAL REFUSAL: POINT OF PILE ELEVATION 60% OF THE STANDARD SPECIFICATION IN PLACE BEARING VALUES ARE NOT REQUIRED FOR PILES BEARING ON ROCK WHEN DRIVEN TO PRACTICAL REFUSAL.

**Driving Criteria**

PRACTICAL REFUSAL-DRIVE POINT BEARING PILES TO PRACTICAL REFUSAL FOR THIS PROJECT MINIMUM BLOW COUNTS ARE REACHED AFTER TOTAL PENETRATION BECOMES 1/4 INCH OR LESS FOR 5 CONSECUTIVE BLOWS. PRACTICAL REFUSAL IS THE POINT OF PILE ELEVATION 60% OF THE STANDARD SPECIFICATION WITH TOTAL PENETRATION OF 1/4 INCH OR LESS. ADVANCE THE PRODUCTION PILING TO THE DRIVING RESISTANCE SPECIFIED ABOVE AND TO DEPTHS CLEARING OPERATIONS AND PILES MUST BE DRIVEN TO BELOW DAMAGED DURING DRIVING. IF HARD DRIVING IS ENCOUNTERED BECAUSE OF DENSE STRATA OR AN OBSTRUCTION SUCH AS A BOULDER BEFORE THE PILE IS ADVANCED TO THE AVERAGE DRIVING RESISTANCE SPECIFIED FOR PRACTICAL REFUSAL IS REQUIRED TO FURTHER ADVANCE THE PILE, DRIVE ADDITIONAL PRODUCTION AND TEST PILES IF DIRECTED BY THE ENGINEER.  
HAMMER CRITERIA: A HAMMER WITH A RAISED ENERGY OF BETWEEN 30 AND 55 KIP-FT ENCOUNTERING EXCESSIVE BLOW COUNTS OR DAMAGING THE PILE, THE CONTRACTOR SHALL SUBMIT THE PROPOSED PILE DRIVING SYSTEM TO THE DEPARTMENT FOR REVIEW AND APPROVAL. THE CONTRACTOR SHALL SUBMIT THE FIELD PERFORMANCE OF THE PILE DRIVING PROCEDURES.

**Field Data**

FOR EACH PILE, THE PROJECT ENGINEER SHALL RECORD THE FOLLOWING ON THIS SHEET. FILE THIS RECORD TO THE PROJECT RECORDS AND THE CALCULATED FIELD BEARING.  
ATTN: DIRECTOR OF TRANSPORTATION CABINET  
DIVISION OF STRUCTURAL DESIGN  
THIRD FLOOR EAST  
1600 STATE STREET  
FRANKFORT, KY 40622

THIS PILE RECORD DOES NOT REPLACE OTHER PILE RECORDS THE PROJECT ENGINEER IS REQUIRED TO KEEP.  
USE HP 12X53 IN ACCORDANCE WITH BPS-003-09, C.E.  
PILES ARE GRADE 50 STEEL.

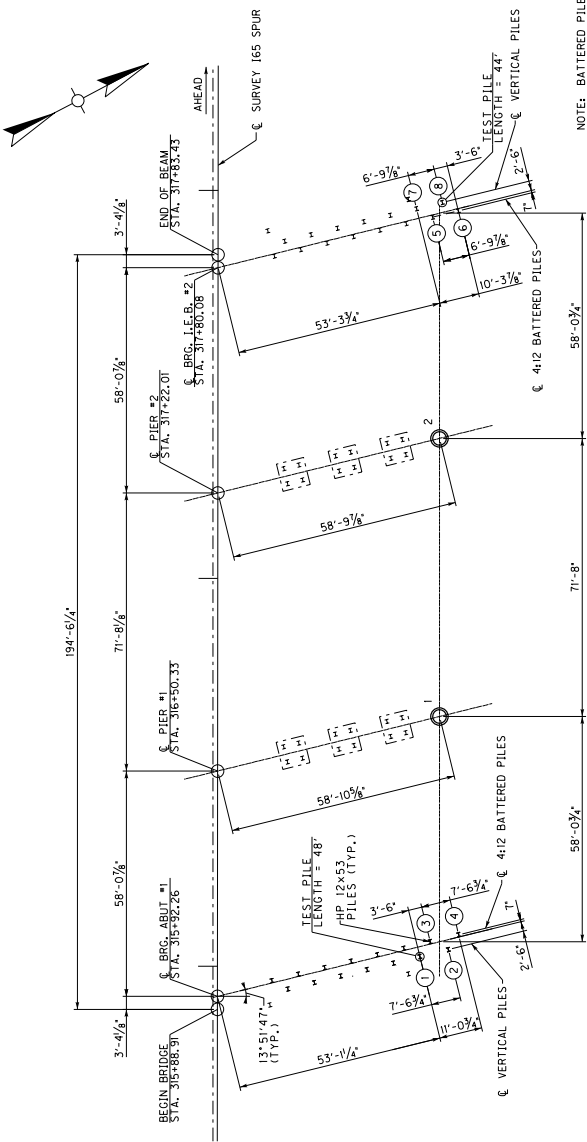
PERMANENT CASING IS INCIDENTAL TO THE UNIT BID PRICE FOR DRILLED SHAFT - 54" INCH (COMMON) OR DRILLED SHAFT - 48" INCH (SOLID ROCK), AS APPLICABLE.

THE CONTRACTOR WILL BE RESPONSIBLE FOR PROVIDING SUBSURFACE EXPLORATION. ADDITIONAL DRILLING WILL BE REQUIRED AT EACH DRILLED SHAFT LOCATION IN ACCORDANCE WITH THE SPECIAL NOTE FOR DRILLED SHAFTS, CURRENT EDITION.

THIS PROJECT IS LOCATED IN A SITE CONSIDERED TO BE KARST INTENSE. THERE IS A POTENTIAL TO ENCOUNTER UNSOUND BEDROCK OR FOR CONCRETE LOSS DURING SHAFT SOCKET CONSTRUCTION. THE CONTRACTOR SHOULD BE PREPARED TO ADDRESS POURING OF CLEAN CONCRETE AND RE-DRILLING FOR STRUCTURAL CONCRETE AFTER SETUP, AND PERMANENT CASING EXTENDED THROUGH THE UNSOUND PORTION OF THE PERMANENT CASING. SOCKET LENGTHS SHALL BE MEASURED FROM THE BASE OF PERMANENT CASING.

DRILLED SHAFTS SHALL BE CONSTRUCTED IN ACCORDANCE WITH THE SPECIAL NOTE FOR DRILLED SHAFTS, INCLUDING CASING MATERIALS INCLUDING SPIRAL AND LONGITUDINAL REINFORCEMENT, REINFORCEMENT SPLICES, AND MECHANICAL COUPLERS, CONCRETE, AND TEMPORARY OR PERMANENT CASING, LABOR, AND DRILLED SHAFTS, COMMON OR SOLID ROCK, AS APPLICABLE.

EVALUATIONS FOR THE BOTTOM DRILLED SHAFT, COMMON, BOTTOM OF CASING, TOP OF DRILLED SHAFT-SOLID ROCK, AND BOTTOM OF DRILLED SHAFT-SOLID ROCK WILL BE DETERMINED BY THE DIVISION OF STRUCTURAL DESIGN, GEOTECHNICAL BRANCH, FOR THE DRILLED SHAFT-SOLID ROCK FOUNDATION. THE SHEET BORE ESTIMATE FOR THE ACTUAL INSTALLED AND PAID QUANTITY WILL BE DETERMINED AFTER THE ROCK SOUNDING AND ROCK SHOPPING IS COMPLETE. IN ACCORDANCE WITH THE SPECIAL NOTE FOR DRILLED SHAFTS, THE CONTRACTOR SHALL COMPLETE THE SPECIAL NOTE AFTER COMPLETING THE DRILLING OPERATION. THE RESIDUAL ENGINEER SHALL COMPLETE THE DRILLED SHAFT RECORD. ONE COPY OF THE COMPLETED RECORD SHALL BE FORWARDED TO THE DIRECTOR, DIVISION OF STRUCTURAL DESIGN. THIS DRILLED SHAFT RECORD DOES NOT REPLACE THE RECORDS FOR ADDITIONAL REQUIRED DRILLED SHAFT RECORDS.



NOTE: BATTERED PILES SHOWN AT BOTTOM OF THE CAP

PERMANENT CASING IS INCIDENTAL TO THE UNIT BID PRICE FOR DRILLED SHAFT - 54" INCH (COMMON) OR DRILLED SHAFT - 48" INCH (SOLID ROCK), AS APPLICABLE.

THE CONTRACTOR WILL BE RESPONSIBLE FOR PROVIDING SUBSURFACE EXPLORATION. ADDITIONAL DRILLING WILL BE REQUIRED AT EACH DRILLED SHAFT LOCATION IN ACCORDANCE WITH THE SPECIAL NOTE FOR DRILLED SHAFTS, CURRENT EDITION.

THIS PROJECT IS LOCATED IN A SITE CONSIDERED TO BE KARST INTENSE. THERE IS A POTENTIAL TO ENCOUNTER UNSOUND BEDROCK OR FOR CONCRETE LOSS DURING SHAFT SOCKET CONSTRUCTION. THE CONTRACTOR SHOULD BE PREPARED TO ADDRESS POURING OF CLEAN CONCRETE AND RE-DRILLING FOR STRUCTURAL CONCRETE AFTER SETUP, AND PERMANENT CASING EXTENDED THROUGH THE UNSOUND PORTION OF THE PERMANENT CASING. SOCKET LENGTHS SHALL BE MEASURED FROM THE BASE OF PERMANENT CASING.

DRILLED SHAFTS SHALL BE CONSTRUCTED IN ACCORDANCE WITH THE SPECIAL NOTE FOR DRILLED SHAFTS, INCLUDING CASING MATERIALS INCLUDING SPIRAL AND LONGITUDINAL REINFORCEMENT, REINFORCEMENT SPLICES, AND MECHANICAL COUPLERS, CONCRETE, AND TEMPORARY OR PERMANENT CASING, LABOR, AND DRILLED SHAFTS, COMMON OR SOLID ROCK, AS APPLICABLE.

EVALUATIONS FOR THE BOTTOM DRILLED SHAFT, COMMON, BOTTOM OF CASING, TOP OF DRILLED SHAFT-SOLID ROCK, AND BOTTOM OF DRILLED SHAFT-SOLID ROCK WILL BE DETERMINED BY THE DIVISION OF STRUCTURAL DESIGN, GEOTECHNICAL BRANCH, FOR THE DRILLED SHAFT-SOLID ROCK FOUNDATION. THE SHEET BORE ESTIMATE FOR THE ACTUAL INSTALLED AND PAID QUANTITY WILL BE DETERMINED AFTER THE ROCK SOUNDING AND ROCK SHOPPING IS COMPLETE. IN ACCORDANCE WITH THE SPECIAL NOTE FOR DRILLED SHAFTS, THE CONTRACTOR SHALL COMPLETE THE SPECIAL NOTE AFTER COMPLETING THE DRILLING OPERATION. THE RESIDUAL ENGINEER SHALL COMPLETE THE DRILLED SHAFT RECORD. ONE COPY OF THE COMPLETED RECORD SHALL BE FORWARDED TO THE DIRECTOR, DIVISION OF STRUCTURAL DESIGN. THIS DRILLED SHAFT RECORD DOES NOT REPLACE THE RECORDS FOR ADDITIONAL REQUIRED DRILLED SHAFT RECORDS.

**Drilled Shaft Record**

Drilled Shaft No.	Top of Shaft Drilled Elevation	Top of Shaft Elevation	Bottom of Shaft As Drilled	Bottom of Shaft Common Elev.	Total Length of Drilled Shaft	Total Length of Common Solid Rock
1	555.668	536.000	526.000			
2	556.221	531.000	521.000			

**PILE RECORD FOR POINT BEARING PILES**

PILE No.	Cut-off Elevation	Point of Pile Elevation As Driven	Design Axial Load
1	590.682	570.9	70.3
2	590.682	570.9	70.3
3	590.682	570.9	70.3
4	590.682	570.9	70.3
5	573.580	553.9	70.9
6	573.580	553.9	70.9
7	573.580	553.9	70.9
8	573.580	553.9	70.9

PROJECT HAMMER NUMBER	HAMMER MANUFACTURER AND MODEL	WEIGHT OF RAM W/ LBS.	MAXIMUM RATED ENERGY FT-LBS

REVISION

DATE	REVISION	CHECKED BY
04-24-2018		J. MILES
		J. MILES

DESIGNED BY: J. JONES  
DETAILED BY: J. JONES

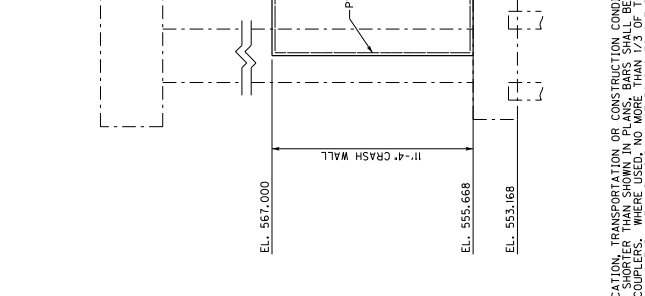
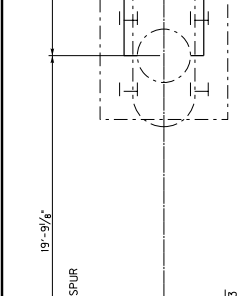
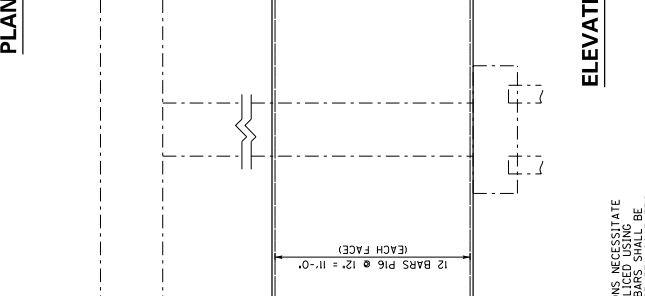
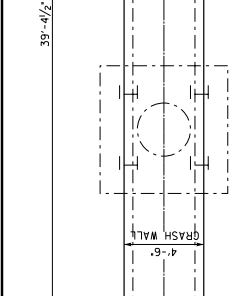
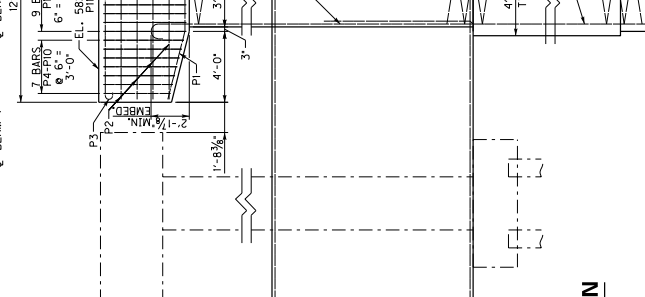
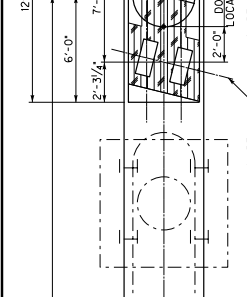
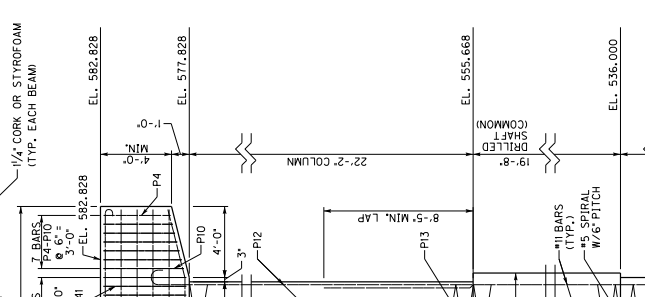
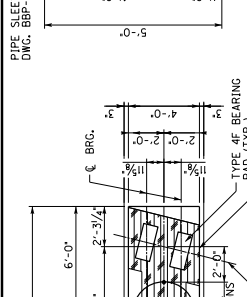
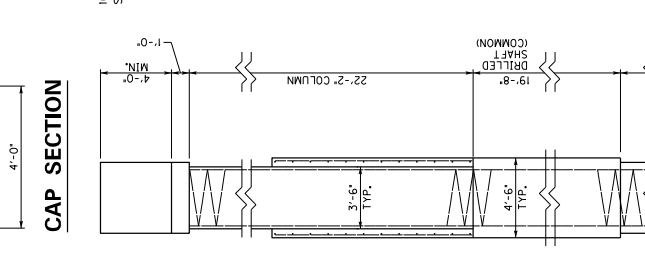
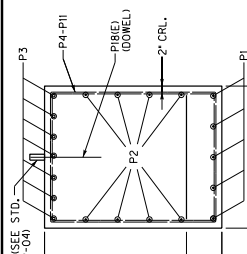
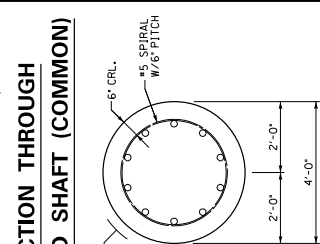
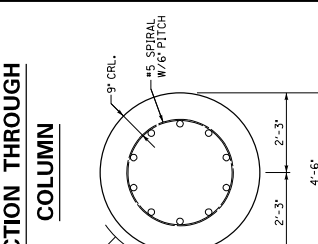
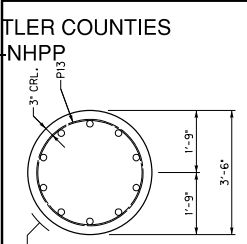
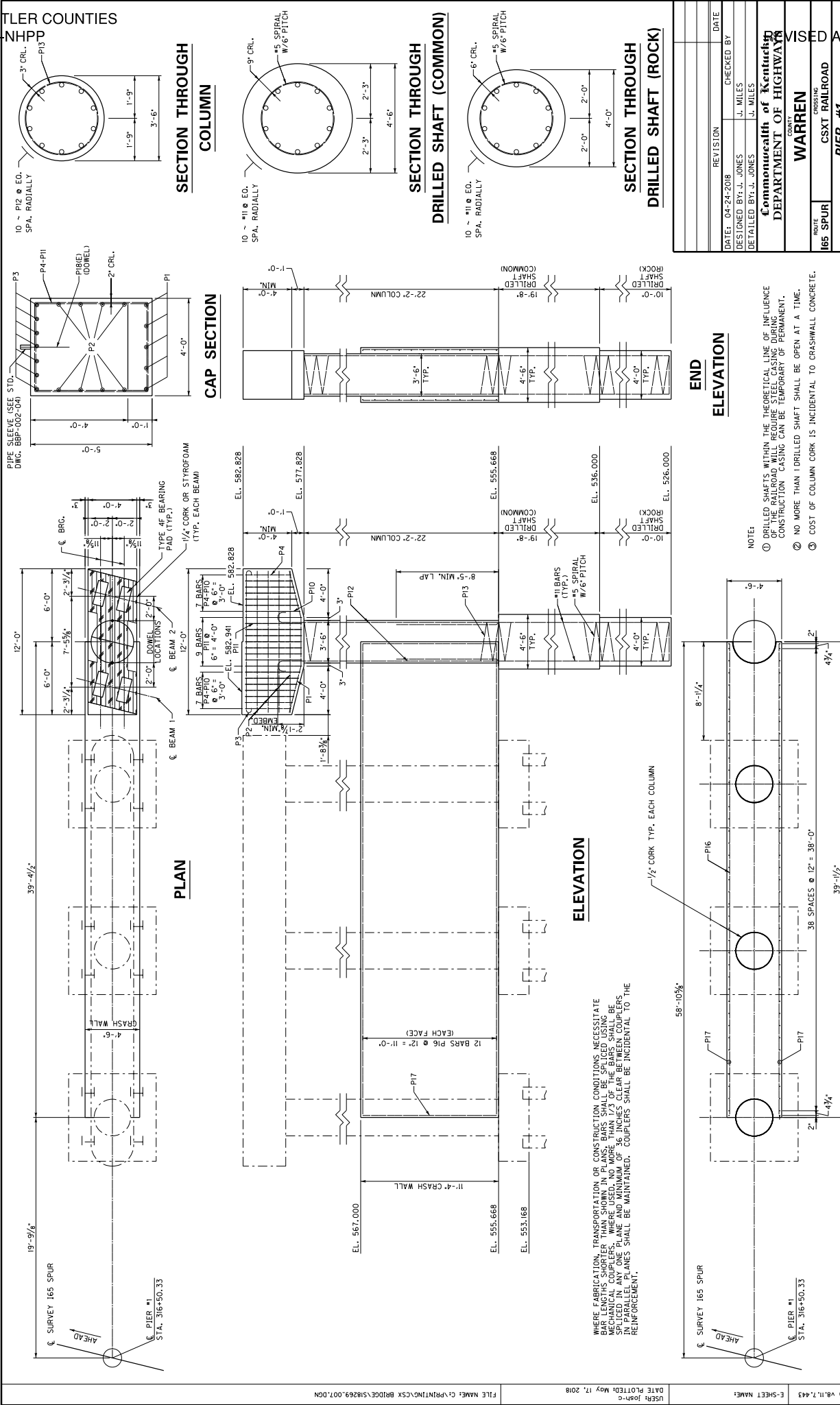
**Commonwealth of Kentucky**  
**DEPARTMENT OF HIGHWAYS**

**WARREN**

ROUTE 165 SPUR  
CSXT RAILROAD  
**FOUNDATION LAYOUT**

PREPARED BY: **AEI**  
2000 Nelson Parkway  
Louisville, KY 40223  
502.752-8181  
AMERICAN ENGINEERS, INC.  
PROFESSIONAL ENGINEERS  
www.aei-cc.com

ITEM NUMBER  
**3-2042.10**



REVISION	DATE	CHECKED BY
DESIGNED BY: J. JONES	J. MILES	
DETAILED BY: J. JONES	J. MILES	

**Commonwealth of Kentucky**  
**DEPARTMENT OF HIGHWAYS**  
**WARREN**  
 ROUTE 165 SPUR CROSSING  
**CSXT RAILROAD**  
**PIER #1**

PREPARED BY: MBE Parkway  
 2500 Nelson  
 Louisville, KY 40225  
 (502) 262-8812  
**AMERICAN ENGINEERS, INC.**  
 PROFESSIONAL ENGINEERING  
 WWW.AEI-CC

**END**

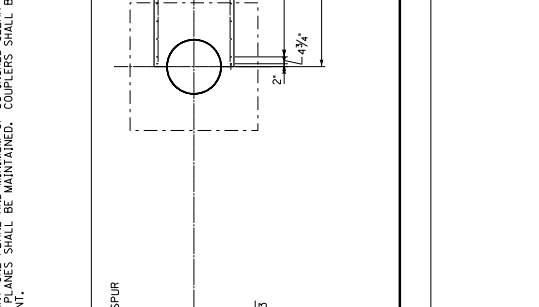
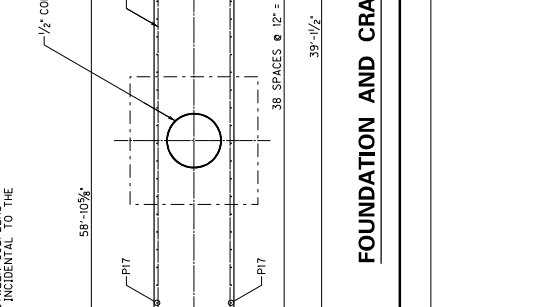
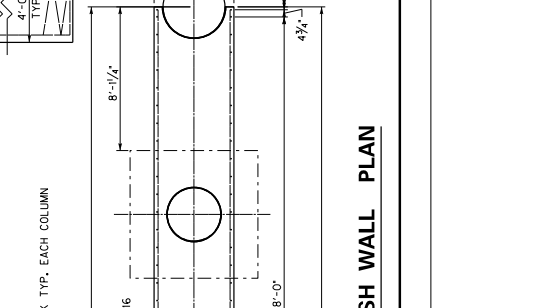
**ELEVATION**

NOTE:  
 ① DRILLED SHAFTS WITHIN THE THEORETICAL LINE OF INFLUENCE OF THE RAILROAD WILL REQUIRE STEEL CASING DURING CONSTRUCTION. CASING CAN BE TEMPORARY OF PERMANENT.  
 ② NO MORE THAN 1 DRILLED SHAFT SHALL BE OPEN AT A TIME.  
 ③ COST OF COLUMN CORK IS INCIDENTAL TO CRASHWALL CONCRETE.

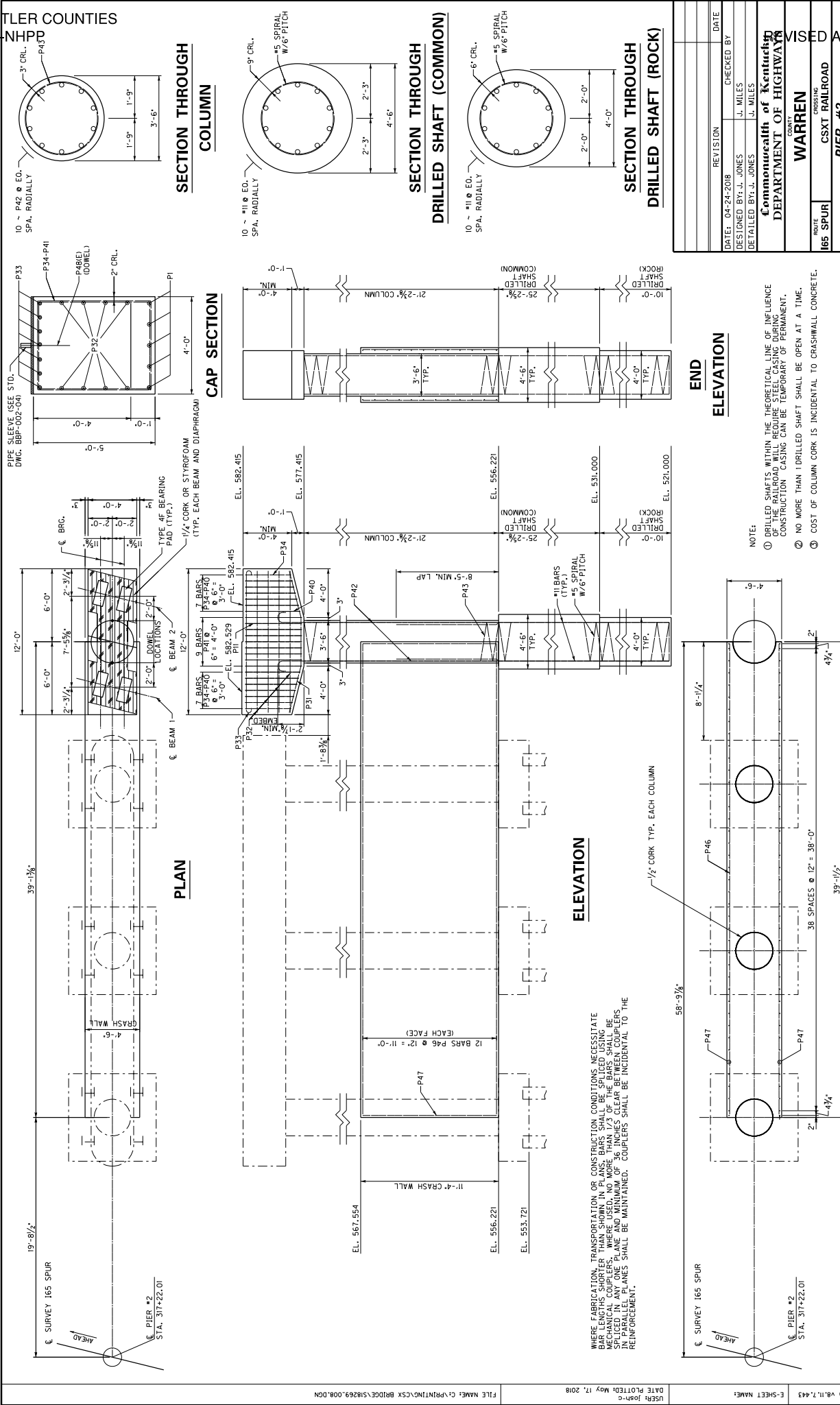
ITEM NUMBER	3-2042.10
-------------	-----------

**FOUNDATION AND CRASH WALL PLAN**

WHERE FABRICATION, TRANSPORTATION OR CONSTRUCTION CONDITIONS NECESSITATE THE USE OF COUPLERS IN THE REINFORCEMENT, THE COUPLERS SHALL BE SPLICED IN ANY ONE PLANE AND MINIMUM OF 36 INCHES CLEAR BETWEEN COUPLERS IN PARALLEL PLANES SHALL BE MAINTAINED. COUPLERS SHALL BE INCIDENTAL TO THE REINFORCEMENT.



USER: josh-c	DATE PLOTTED: May 17, 2018
E-SHEET NAME:	
FILE NAME: C:\P\INT\N\CSX BRIDGE\518269.007.DGN	



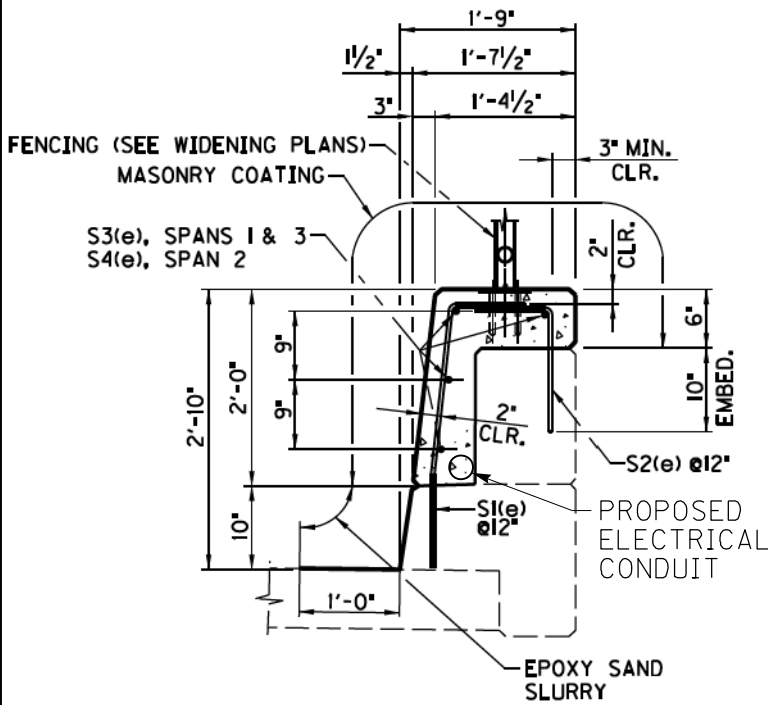
WHERE FABRICATION, TRANSPORTATION OR CONSTRUCTION CONDITIONS NECESSITATE  
MECHANICAL COUPLERS, WHERE USED, NO MORE THAN 1/2 OF THE BARS SHALL BE  
SPliced IN ANY ONE PLANE AND MINIMUM OF 36 INCHES CLEAR BETWEEN COUPLERS.  
COUPLERS SHALL BE MAINTAINED. COUPLERS SHALL BE INCIDENTAL TO THE  
REINFORCEMENT.

- NOTE:
- ① DRILLED SHAFTS WITHIN THE THEORETICAL LINE OF INFLUENCE OF THE RAILROAD WILL REQUIRE STEEL CASING DURING CONSTRUCTION. CASING CAN BE TEMPORARY OR PERMANENT.
  - ② NO MORE THAN 1 DRILLED SHAFT SHALL BE OPEN AT A TIME.
  - ③ COST OF COLUMN CORK IS INCIDENTAL TO CRASHWALL CONCRETE.

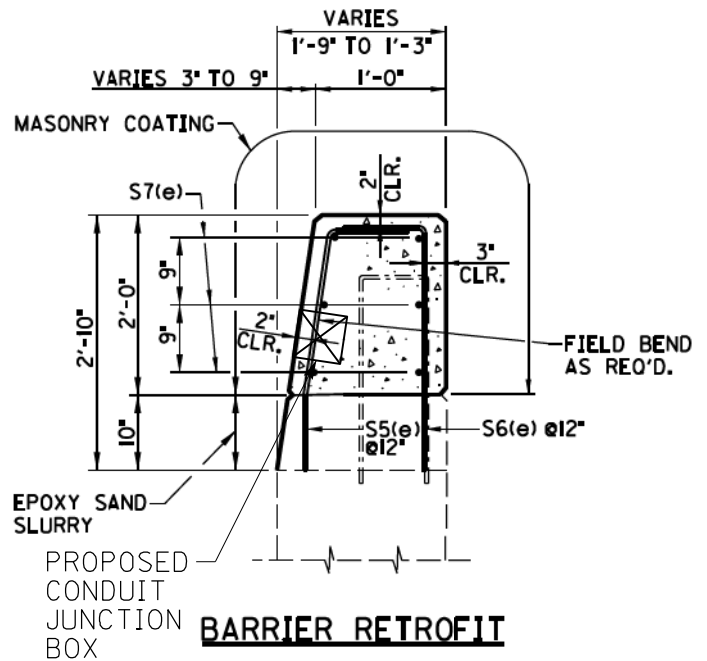
REVISION	DATE
DESIGNED BY: J. JONES	CHECKED BY: J. MILES
DETAILED BY: J. JONES	J. MILES
<b>Commonwealth of Kentucky</b> <b>DEPARTMENT OF HIGHWAYS</b>	
<b>WARREN</b>	
ROUTE	CROSSING
165 SPUR	CSXT RAILROAD
<b>PIER #2</b>	
PREPARED BY: <b>AMERICAN ENGINEERS, INC.</b> 2500 Nelson Parkway Louisville, KY 40223 (502) 262-8812 WWW.AEI-CC.COM PROFESSIONAL ENGINEER	

ITEM NUMBER	3-2042.10
FOUNDATION AND CRASH WALL PLAN	

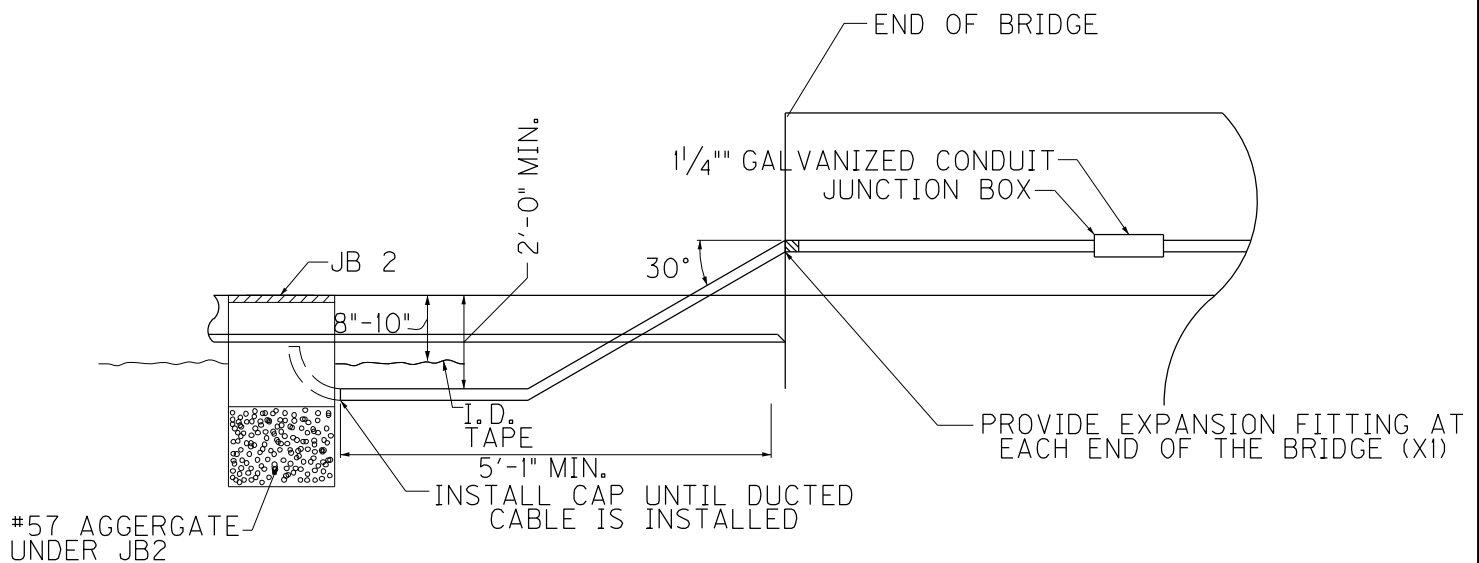
COUNTY OF	ITEM NO.	SHEET NO.
WARREN	2-2092	3-2042
REVISED ADDENDUM #1: 5-17-18		



**BARRIER RETROFIT**



**BARRIER RETROFIT**



**END OF BRIDGE DETAIL**

(PLACE CONDUIT TO AVOID GUARDRAIL BEYOND END OF BRIDGE)

NATCHER PARKWAY MAINLINE  
CONDUIT IN BARRIER RETROFIT

SCALE: 1"=

**BILL OF REINFORCEMENT - END BENT 1**

MARK	TYPE	SIZE	LENGTH		LOCATION	A		B		C		D	
			NUMBER	FT IN		FT IN	FT IN	FT IN	FT IN	FT IN	FT IN	FT IN	FT IN
A1	②	5	30	5	11	CAP	0	4	5	4			
A2	STR	5	2	16	3	CAP							
A3	STR	5	2	14	0 1/2	CAP							
A4	STR	5	15	5	2	CAP							
A5	STR	5	16	13	4 1/2	CAP							
A6	④	5	15	14	8 1/2	CAP	2	0 1/4	5	4			
A7	STR	5	2	8	1	CAP							
A8	STR	5	2	8	1	CAP							
A9	STR	5	6	21	15 1/2	CAP							
A10	STR	5	2	8	2 1/2	WING WALLS							
A11	STR	5	2	8	10 1/2	WING WALLS							
A12	STR	5	2	9	6 1/2	WING WALLS							
A13	STR	5	2	10	1	WING WALLS, CAP							
A14	STR	5	3	21	11 1/2	WING WALLS							
A15	STR	5	3	21	11 1/2	WING WALLS							
A16	STR	5	3	21	11 1/2	WING WALLS							
A17	STR	5	1	6	0 1/2	WING WALLS							
A18	STR	5	1	6	2 1/4	WING WALLS							
A19	⑥	5	1	6	0 1/2	WING WALLS	3	1 1/2	3	4 1/2	1	10 1/2	2
A20	STR	5	1	6	8	WING WALLS							
A21	STR	5	2	15	0 1/2	PARAPET							
A22	STR	5	2	13	3 1/2	PARAPET							
A23	STR	5	2	13	3 1/2	PARAPET							
A24	STR	5	8	3	5	DOWELS							
A25	STR	5	12	3	5	DOWELS							

**BILL OF REINFORCEMENT - END BENT 2**

MARK	TYPE	SIZE	LENGTH		LOCATION	A		B		C		D	
			NUMBER	FT IN		FT IN	FT IN	FT IN	FT IN	FT IN	FT IN	FT IN	FT IN
A31	②	5	30	5	11	CAP	0	4	5	4			
A32	STR	5	2	15	1 1/4	CAP							
A33	STR	5	2	13	11 1/2	CAP							
A34	STR	5	2	14	1 1/2	CAP							
A35	STR	5	6	14	8	CAP							
A36	④	5	15	14	8 1/2	CAP	2	0 1/4	5	4			
A37	STR	5	32	8	11	CAP							
A38	STR	5	6	21	1 1/4	CAP							
A39	STR	5	16	21	1 1/4	CAP							
A40	STR	5	2	8	12 1/2	WING WALLS							
A41	STR	5	2	8	10 1/2	WING WALLS							
A42	STR	5	2	8	10 1/2	WING WALLS							
A43	STR	5	6	10	16 1/2	WING WALLS							
A44	STR	5	3	21	1 1/4	WING WALLS, CAP							
A45	STR	5	1	3	4	WING WALLS							
A46	STR	5	1	3	4	WING WALLS							
A47	STR	5	1	3	9	WING WALLS							
A48	⑥	5	1	5	12 1/2	WING WALLS	1	10	3	4 1/2	1	10 1/2	2
A49	STR	5	1	5	12 1/2	WING WALLS							
A50	STR	5	1	5	12 1/2	WING WALLS							
A51	STR	5	1	5	12 1/2	WING WALLS							
A52	STR	5	1	5	12 1/2	WING WALLS							
A53	⑦	5	16	5	11	PARAPET	2	5	3	4 1/2	1	10 1/2	2
A54	STR	5	1	16	0 1/2	PARAPET							
A55	STR	5	2	14	2 1/2	CAP							
A56	STR	5	2	14	5	CAP							
A57	STR	5	8	3	5	DOWELS							
A58	STR	5	12	3	5	DOWELS							

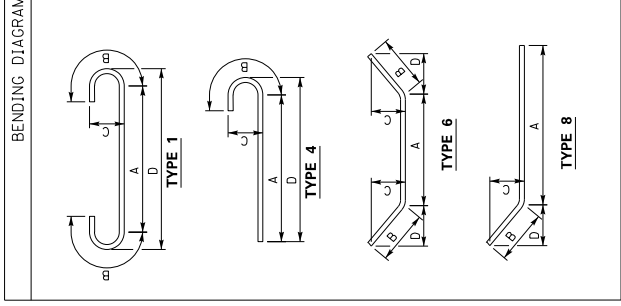
**BILL OF REINFORCEMENT - PIER #1**

MARK	TYPE	SIZE	LENGTH		LOCATION	A		B		C		D	
			NUMBER	FT IN		FT IN	FT IN	FT IN	FT IN	FT IN	FT IN	FT IN	FT IN
P1	⑥	5	5	11	10 1/2	CAP	3	11 1/2	3	11 1/2	0	11 1/2	3
P2	STR	5	8	11	8	CAP							
P3	①	9	7	14	6 1/4	CAP	10	18 1/4	1	11	0	11 1/4	11
P4	①	9	7	14	6 1/4	CAP	3	9 1/4	3	8			
P5	①	9	7	14	6 1/4	CAP	3	11	3	8			
P6	①	9	7	14	6 1/4	CAP	4	0 1/2	3	8			
P7	①	9	7	14	6 1/4	CAP	4	7	3	8			
P8	①	9	7	14	6 1/4	CAP	4	7	3	8			
P9	①	9	7	14	6 1/4	CAP	4	4	3	8			
P10	①	9	7	14	6 1/4	CAP	4	6 3/4	3	8			
P11	①	9	7	14	6 1/4	CAP	4	8	3	8			
P12	①	10	10	25	11 1/4	COLUMN	23	9 1/4	2	2	1	1 1/4	24
P13	①	5	1	45	0 1/4	COLUMN	22	2	0	6	3	0	48
P14						NOT USED							
P15						NOT USED							
P16	STR	5	24	38	9 1/2	CRASHWALL							
P17	STR	5	82	11	0	CRASHWALL							
P18	STR	5	2	2	0	CAP DOWEL							

**BILL OF REINFORCEMENT - PIER #2**

MARK	TYPE	SIZE	LENGTH		LOCATION	A		B		C		D	
			NUMBER	FT IN		FT IN	FT IN	FT IN	FT IN	FT IN	FT IN	FT IN	FT IN
P31	⑥	5	5	11	10 1/2	CAP	3	11 1/2	3	11 1/2	0	11 1/2	3
P32	STR	5	8	11	8	CAP							
P33	①	9	7	14	6 1/4	CAP	10	18 1/4	1	11	0	11 1/4	11
P34	①	9	7	14	6 1/4	CAP	3	9 1/4	3	8			
P35	①	9	7	14	6 1/4	CAP	3	11	3	8			
P36	①	9	7	14	6 1/4	CAP	4	0 1/2	3	8			
P37	①	9	7	14	6 1/4	CAP	4	7	3	8			
P38	①	9	7	14	6 1/4	CAP	4	7	3	8			
P39	①	9	7	14	6 1/4	CAP	4	6 3/4	3	8			
P40	①	9	7	14	6 1/4	CAP	4	8	3	8			
P41	①	9	7	14	6 1/4	CAP	4	7	3	8			
P42	①	9	7	14	6 1/4	CAP	4	7	3	8			
P43	①	5	1	45	0 1/4	COLUMN	23	9 1/4	2	2	1	1 1/4	24
P44	①	5	1	45	0 1/4	COLUMN	22	2	0	6	3	0	48
P45						NOT USED							
P46	STR	5	24	38	9 1/2	CRASHWALL							
P47	STR	5	82	11	0	CRASHWALL							
P48	STR	5	2	2	0	CAP DOWEL							

\* USE 1/2" DIAMETER EPOXY COATED, SMOOTH ROUND FIN.  
MAY BE OF COMMERCIAL GRADE'S WEIGHT IS INCLUDED  
IN ESTIMATE OF QUANTITIES FOR STEEL REINFORCEMENT, EPOXY COATED.



REVISION	DATE
DESIGNED BY: J. MILES	CHECKED BY: J. MILES
DETAILED BY: J. MILES	J. MILES
<b>Commonwealth of Kentucky</b>	
<b>DEPARTMENT OF HIGHWAYS</b>	
<b>WARREN</b>	
ROUTE 165 SPUR	CSXT RAILROAD CROSSING
<b>SUBSTRUCTURE - B.O.R.</b>	
PREPARED BY: <b>A.E.J.</b> 2500 Nelson Parkway Louisville, KY 40223 (502) 262-8812 <b>AMERICAN ENGINEERS, INC.</b> PROFESSIONAL ENGINEER WWW.AEI-EC	

ITEM NUMBER	3-2042.10
-------------	-----------

**BRIDGE 114B00053L SUMMARY OF QUANTITIES**

**1. DISTRICT** 3  
**2. COUNTY** WARREN  
**3. ROUTE** NATCHER PARKWAY  
**4. ROAD NAME** NATCHER PARKWAY SOUTHBOUND  
**5. DESCRIPTION** NATCHER PARKWAY SOUTHBOUND OVER US 68/KY 80  
**6. TYPE OF WORK** BRIDGE BARRIER RETROFIT, OVERLAY AND JOINT REPLACEMENT

**LENGTH (FT):** 227.04  
**BRIDGE WIDTH (FT):** 33.50  
**SURFACE AREA (SY):** 845.10  
**SKEW (DEGREES):** 25.67 LT  
**DECK THICKNESS (IN.):** 8.00

**ESTIMATED QUANTITIES REQUIRED**

ITEM CODE	DESCRIPTION	QUANTITY	UNIT
2998	MASONRY COATING	220	SY
3298	EXPAN JOINT REPLACE 4 IN	67	LF
3299	ARMORED EDGE FOR CONCRETE	67	LF
3304	BRIDGE OVERLAY APPROACH PAVEMENT	667	SY
8150	STEEL REINFORCEMENT	267	LB
8504	EPOXY SAND SLURRY	96	SY
8526	CONC CLASS M FULL DEPTH PATCH	7	CY
8534	CONCRETE OVERLAY-LATEX	41.3	CY
8549	BLAST CLEANING	744	SY
8551	MACHINE PREPARATION OF SLAB	744	SY
23032EN	BRIDGE BARRIER RETROFIT	494	LF
24094EC	PARTIAL DEPTH PATCHING	11	CY

**BRIDGE 114B00053R SUMMARY OF QUANTITIES**

**1. DISTRICT** 3  
**2. COUNTY** WARREN  
**3. ROUTE** NATCHER PARKWAY  
**4. ROAD NAME** NATCHER PARKWAY NORTHBOUND  
**5. DESCRIPTION** NATCHER PARKWAY NORTHBOUND OVER US 68/KY 80  
**6. TYPE OF WORK** BRIDGE BARRIER RETROFIT, OVERLAY AND JOINT REPLACEMENT

**LENGTH (FT):** 227.04  
**BRIDGE WIDTH (FT):** 33.50  
**SURFACE AREA (SY):** 845.10  
**SKEW (DEGREES):** 25.67 LT  
**DECK THICKNESS (IN.):** 8.00

**ESTIMATED QUANTITIES REQUIRED**

ITEM CODE	DESCRIPTION	QUANTITY	UNIT
2998	MASONRY COATING	220	SY
3298	EXPAN JOINT REPLACE 4 IN	67	LF
3299	ARMORED EDGE FOR CONCRETE	67	LF
3304	BRIDGE OVERLAY APPROACH PAVEMENT	667	SY
8150	STEEL REINFORCEMENT	267	LB
8504	EPOXY SAND SLURRY	96	SY
8526	CONC CLASS M FULL DEPTH PATCH	7	CY
8534	CONCRETE OVERLAY-LATEX	41.3	CY
8549	BLAST CLEANING	744	SY
8551	MACHINE PREPARATION OF SLAB	744	SY
23032EN	BRIDGE BARRIER RETROFIT	494	LF
24094EC	PARTIAL DEPTH PATCHING	11	CY



## **SPECIAL NOTE FOR REPLACING EXPANSION DAMS AND/OR INSTALLING ARMORED EDGES FOR CONCRETE ON BRIDGES**

**I. DESCRIPTION.** Perform all work in accordance with the Kentucky Transportation Cabinet, Department of Highway's 2012 Standard Specifications for Road and Bridge Construction and applicable Supplemental Specifications, the Standard Drawings, this Note, and the attached detail drawings. Section references are to the Standard Specifications.

This work consists of the following: (1) Furnish all labor, materials, tools, and equipment; (2) Remove existing concrete and expansion device(s) and/or bridge ends; (3) Install armored edges and new concrete as specified and in accordance with the attached detail drawings; (4) Install new joint seals (where required); (5) Maintain and control traffic; and (6) Any other work specified as part of this contract.

### **II. MATERIALS.**

**A. Class "M" Concrete.** Use either "M1" or "M2". See Section 601.

**B. Structural Steel.** Use new, commercial grade steel suitable for welding. The Engineer will base acceptance on visual inspection. For armored edges that make up the 4" neoperene joint, use Steelflex Strip Seal expansion joint by DS Brown, or approved equal. To be approved, armored edge extrusions must be embedded.

**C. Stud Anchors.** The armored edge stud anchors are ¾" embedded stud shear connectors conforming to ASTM A108, Grade 1015 (Nelson Studs or equal).

**D. Steel Reinforcement.** Use Grade 60. See Section 602.

**E. Epoxy Bond Coat.** See Section 511.

**F. Neoprene Strip Seals.** See attached detail drawings and Section 807.

### **III. EQUIPMENT.**

**A. Hammers.** See Section 606.02.10 B.

**B. Sawing Equipment.** See Section 606.02.10 C.

**C. Hydraulic Impact Equipment.** See Section 606.02.10 D.

### **IV. CONSTRUCTION.**

**A. Remove Existing Materials.** Remove existing Expansion Dam, Bridge End, Armored Edges and specified areas of concrete as shown on the attached sketches. Remove debris and/or expansion joint filler as directed by the Engineer. Clean and leave all existing steel reinforcement encountered in place. Damaged steel reinforcement will be repaired/replaced as directed by the Engineer at no additional cost to the Department.

Dispose of all removed material entirely away from the job site. This work is incidental to the contract unit price for "Expansion Joint Replacement" or "Armored Edge for Concrete".

**B. Place New Concrete and Armored Edges.** After all specified existing materials have been removed; place new armored edges to match the grade of the proposed overlay or to match the original grade (See attached detail drawings). Place the new Class "M" concrete to the scarified grade and finish to receive the new overlay or place the new

Class "M" concrete to the original grade and finish with broom strokes drawn transversely from curb to curb.

All new structural steel shall be cleaned and painted in accordance with requirements of Section 607.03.23, except that surfaces to come in contact with concrete are not to be painted.

Blast clean all areas of existing concrete and structural steel to come in contact with new concrete until free of all laitance and deleterious substances immediately prior to the placement of the Class "M" Concrete. The surface areas of existing concrete to come in contact with the new Class "M" Concrete are to be coated with an epoxy bond coat immediately prior to placing new concrete in accordance with Section 511. The interfaces of the new and old concrete shall be as nearly vertical and horizontal as possible.

- C. Additional Steel Reinforcement.** Furnish for replacement, as directed by the Engineer, 400 linear feet (Bridge 114B00053R & Bridge 114B00053L) of #4 steel reinforcing bars in 20' lengths. Place these bars in areas deemed by the Engineer to require additional reinforcement. Field cutting and bending is permitted. Do not place any additional steel reinforcement above the height of the top row of Nelson Studs on the armored edges. Ensure that all exposed steel reinforcement is tied in accordance with Section 602.03.04 prior to pouring the new Class "M" concrete. Deliver unused bars to the Local County Maintenance Barn. Payment will be made in accordance with Section 602.
- D. Stage Construction.** Installation of concrete and armored edges in two (or more if specified) stages is necessary. Join the armored edges at or near the centerline of the roadway or lane line, field weld and grind smooth.
- E. Preformed Neoprene Strip Seal.** Place the preformed joint seal in one continuous, unbroken length. Place neoprene strip seals as recommended by the manufacturer and in accordance with Section 609.03.04
- F. Shop Plans.** Shop plans will not be required. The Contractor is responsible for obtaining field measurements and supplying properly sized materials to complete the work.

## V. MEASUREMENT.

- A. Expansion Joint Replacement – 4".** The Department will measure the quantity in linear feet from gutterline to gutterline along the centerline of the joint.
- B. Armored Edge for Concrete.** The Department will measure the quantity in linear feet from gutterline to gutterline along the face of the bridge end.
- C. Steel Reinforcement.** See Section 602.

## VI. PAYMENT.

- A. Expansion Joint Replacement –4".** Payment at the contract unit price per linear foot is full compensation for removing specified existing materials, furnishing and installing the new armored edges, concrete, neoprene strip seal or pre-compressed horizontal expansion joint system, and all incidental items necessary to complete the work (except the overlay material) within the specified pay limits as specified by this note and as shown on the attached detail drawings.

# MATERIAL SUMMARY

**CONTRACT ID: 181013**

**121GR18D013-NHPP**

**DE01601651813**

I-165 SPUR I-65 SPUR CORRIDOR; MODERNIZATION OF EXISTING NATCHER PARKWAY FROM BUTLER-WARREN COUNTY LINE MP 20.246 EXTENDING NORTH TO MP 37.143 IN WARREN COUNTY ASPHALT REHAB INTERSTATE/PARKWAY, A DISTANCE OF 18.2 MILES.

Project Line No	Bid Code	DESCRIPTION	Quantity	Unit
0005	00001	DGA BASE	6,093.00	TON
0010	00003	CRUSHED STONE BASE	3,237.00	TON
0015	00071	CRUSHED AGGREGATE SIZE NO 57	19.00	TON
0020	00078	CRUSHED AGGREGATE SIZE NO 2	5,213.00	TON
0025	00100	ASPHALT SEAL AGGREGATE	392.00	TON
0030	00103	ASPHALT SEAL COAT	47.00	TON
0035	00190	LEVELING & WEDGING PG64-22	1,388.00	TON
0040	00214	CL3 ASPH BASE 1.00D PG64-22	16,235.00	TON
0045	00216	CL3 ASPH BASE 1.00D PG76-22	12,678.00	TON
0050	00309	CL2 ASPH SURF 0.50D PG64-22	3,509.00	TON
0055	00330	CL3 ASPH SURF 0.50A PG64-22	147.00	TON
0060	00332	CL3 ASPH SURF 0.50A PG76-22	6,423.00	TON
0065	00356	ASPHALT MATERIAL FOR TACK	97.80	TON
0070	02677	ASPHALT PAVE MILLING & TEXTURING	508.00	TON
0075	00003	CRUSHED STONE BASE - SHOULDER REPAIR	147.00	TON
0080	00212	CL2 ASPH BASE 1.00D PG64-22 - SHOULDER REPAIR	222.00	TON
0085	00214	CL3 ASPH BASE 1.00D PG64-22 - SHOULDER REPAIR	24.00	TON
0090	00216	CL3 ASPH BASE 1.00D PG76-22 - SHOULDER REPAIR	12.00	TON
0095	00309	CL2 ASPH SURF 0.50D PG64-22 - SHOULDER REPAIR	29.00	TON
0100	00332	CL3 ASPH SURF 0.50A PG76-22 - SHOULDER REPAIR	6.00	TON
0105	22861EN	HIGH STRENGTH GEOTEXTILE FABRIC TY V	6,777.00	SQYD
0110	00212	CL2 ASPH BASE 1.00D PG64-22	17,811.00	TON
0115	00078	CRUSHED AGGREGATE SIZE NO 2	30.00	TON
0120	00212	CL2 ASPH BASE 1.00D PG64-22	381.00	TON
0125	01005	PERFORATED PIPE EDGE DRAIN-4 IN	49,146.00	LF
0130	01010	NON-PERFORATED PIPE-4 IN	1,566.00	LF
0135	01028	PERF PIPE HEADWALL TY 3-4 IN	200.00	EACH
0140	01310	REMOVE PIPE	2,401.00	LF
0145	01718	REMOVE INLET	13.00	EACH
0150	01890	ISLAND HEADER CURB TYPE 1	600.00	LF
0155	01904	REMOVE CURB	7,055.00	LF
0160	01982	DELINEATOR FOR GUARDRAIL MONO DIRECTIONAL WHITE	904.00	EACH
0165	01983	DELINEATOR FOR GUARDRAIL MONO DIRECTIONAL YELLOW	58.00	EACH
0170	01984	DELINEATOR FOR BARRIER - WHITE	114.00	EACH
0175	01985	DELINEATOR FOR BARRIER - YELLOW	74.00	EACH
0180	02003	RELOCATE TEMP CONC BARRIER	6,280.00	LF
0185	02014	BARRICADE-TYPE III	6.00	EACH
0190	02107	BREAKING AND SEATING PAVEMENT	70,934.00	SQYD
0195	02159	TEMP DITCH	12,260.00	LF
0200	02160	CLEAN TEMP DITCH	6,131.00	LF
0205	02165	REMOVE PAVED DITCH	2,219.00	SQYD
0210	02200	ROADWAY EXCAVATION	4,991.00	CUYD

## MATERIAL SUMMARY

Project Line No	Bid Code	DESCRIPTION	Quantity	Unit
0215	02223	GRANULAR EMBANKMENT	100.00	CUYD
0220	02230	EMBANKMENT IN PLACE	23,042.00	CUYD
0225	02237	DITCHING	18,040.00	LF
0230	02242	WATER	2,000.00	MGAL
0235	02363	GUARDRAIL CONNECTOR TO BRIDGE END TY A	15.00	EACH
0240	02367	GUARDRAIL END TREATMENT TYPE 1	8.00	EACH
0245	02369	GUARDRAIL END TREATMENT TYPE 2A	41.00	EACH
0250	02381	REMOVE GUARDRAIL	16,275.00	LF
0255	02383	REMOVE & RESET GUARDRAIL	29,250.00	LF
0260	02387	GUARDRAIL CONNECTOR TO BRIDGE END TY A-1	5.00	EACH
0265	02469	CLEAN SINKHOLE	2.00	EACH
0270	02483	CHANNEL LINING CLASS II	2,528.00	TON
0275	02562	TEMPORARY SIGNS	1,768.00	SQFT
0280	02599	FABRIC-GEOTEXTILE TYPE IV	6,399.00	SQYD
0285	02625	REMOVE HEADWALL	11.00	EACH
0290	02650	MAINTAIN & CONTROL TRAFFIC - BUTLER COUNTY	1.00	LS
0295	02671	PORTABLE CHANGEABLE MESSAGE SIGN	3.00	EACH
0300	02676	MOBILIZATION FOR MILL & TEXT - BUTLER COUNTY	1.00	LS
0305	02678	SCARIFYING PAVEMENT	36,712.00	SQYD
0310	02696	SHOULDER RUMBLE STRIPS	55,021.00	LF
0315	02701	TEMP SILT FENCE	12,260.00	LF
0320	02703	SILT TRAP TYPE A	10.00	EACH
0325	02704	SILT TRAP TYPE B	10.00	EACH
0330	02705	SILT TRAP TYPE C	10.00	EACH
0335	02707	CLEAN SILT TRAP TYPE B	10.00	EACH
0340	02706	CLEAN SILT TRAP TYPE A	10.00	EACH
0345	02708	CLEAN SILT TRAP TYPE C	10.00	EACH
0350	02714	SHOULDERING	2,277.00	LF
0355	02775	ARROW PANEL	3.00	EACH
0360	02898	RELOCATE CRASH CUSHION	9.00	EACH
0365	03171	CONCRETE BARRIER WALL TYPE 9T	4,300.00	LF
0370	05950	EROSION CONTROL BLANKET	34,929.00	SQYD
0375	05952	TEMP MULCH	23,286.00	SQYD
0380	05953	TEMP SEEDING AND PROTECTION	17,465.00	SQYD
0385	05963	INITIAL FERTILIZER	3.80	TON
0390	05964	20-10-10 FERTILIZER	2.10	TON
0395	05985	SEEDING AND PROTECTION	48,648.00	SQYD
0400	05992	AGRICULTURAL LIMESTONE	23.00	TON
0405	06401	FLEXIBLE DELINEATOR POST-M/W	40.00	EACH
0410	06404	FLEXIBLE DELINEATOR POST-M/Y	32.00	EACH
0415	06511	PAVE STRIPING-TEMP PAINT-6 IN	152,000.00	LF
0420	06517	PAVE STRIPING-PERM PAINT-12 IN	1,454.00	LF
0425	06549	PAVE STRIPING-TEMP REM TAPE-B	4,840.00	LF
0430	06550	PAVE STRIPING-TEMP REM TAPE-W	37,300.00	LF
0435	06551	PAVE STRIPING-TEMP REM TAPE-Y	19,200.00	LF
0440	08903	CRASH CUSHION TY VI CLASS BT TL3	3.00	EACH
0445	10020NS	FUEL ADJUSTMENT	94,672.00	DOLL
0450	10030NS	ASPHALT ADJUSTMENT	228,942.00	DOLL
0455	20366NN	REPLACE GRATE	2.00	EACH
0460	20418ED	REMOVE & RELOCATE SIGNS	13.00	EACH

## MATERIAL SUMMARY

Project Line No	Bid Code	DESCRIPTION	Quantity	Unit
0465	20597EC	DITCH EXCAVATION	101.00	CUYD
0470	20411ED	LAW ENFORCEMENT OFFICER	1,280.00	HOURL
0475	21289ED	LONGITUDINAL EDGE KEY	2,275.00	LF
0480	21802EN	G/R STEEL W BEAM-S FACE (7 FT POST)	16,237.50	LF
0485	22883EN	CONCRETE WEDGE CURB	14,985.00	LF
0490	23496EC	MEDIAN CROSSOVER REMOVAL - AROUND MP 35.4	1.00	EACH
0495	24096EC	REMOVE AND RESET END TREATMENT	25.00	EACH
0500	24489EC	INLAID PAVEMENT MARKER	378.00	EACH
0505	02545	CLEARING AND GRUBBING - .058 ACRES-BUTLER COUNTY	1.00	LS
0510	24605ED	RELOCATE - MEDIAN TURN-AROUND MP 34.2	1.00	EACH
0515	24979ED	REGRADE - MEDIAN TURN-AROUND MP 25.4	2.00	EACH
0520	02352	GUARDRAIL-STEEL W BEAM-D FACE	1,175.00	LF
0525	02365	CRASH CUSHION TYPE IX-A	3.00	EACH
0530	02373	GUARDRAIL END TREATMENT TYPE 3	3.00	EACH
0535	02396	REMOVE GUARDRAIL END TREATMENT	17.00	EACH
0540	02929	CRASH CUSHION TYPE IX	1.00	EACH
0545	20432ES112	REMOVE CRASH CUSHION	4.00	EACH
0550	24654ED	SINGLE SLOPE MEDIAN BARRIER - @ GREEN RIVER BRIDGE	200.00	LF
0555	24980ED	ADJUST CRASH WALL HEIGHT - @ EXIT 36 BRIDGE	1.00	L S
0560	08002	STRUCTURE EXCAV-SOLID ROCK	13,506.00	CUYD
0565	01015	INSPECT & CERTIFY EDGE DRAIN SYSTEM - BUTLER COUNTY	1.00	LS
0570	01740	CORED HOLE DRAINAGE BOX CON-4 IN	4.00	EACH
0575	02565	OBJECT MARKER TYPE 2	10.00	EACH
0580	02596	FABRIC-GEOTEXTILE TYPE I	4,054.00	SQYD
0585	02690	SAFELOADING	2.00	CUYD
0590	02726	STAKING - BUTLER COUNTY	1.00	LS
0595	06542	PAVE STRIPING-THERMO-6 IN W	54,281.00	LF
0600	06543	PAVE STRIPING-THERMO-6 IN Y	28,580.00	LF
0605	06546	PAVE STRIPING-THERMO-12 IN W	999.00	LF
0610	40024	ASPHALT PAVEMENT REMOVAL(ALL DEPTHS)	3,334.00	SQYD
0615	20071EC	JOINT ADHESIVE	50,704.00	LF
0620	00522	STORM SEWER PIPE-18 IN	45.00	LF
0625	01450	S & F BOX INLET-OUTLET-18 IN	1.00	EACH
0630	01559	DROP BOX INLET TYPE 13G	1.00	EACH
0635	01690	FLUME INLET TYPE 1	6.00	EACH
0640	01691	FLUME INLET TYPE 2	19.00	EACH
0645	01480	CURB BOX INLET TYPE B	1.00	EACH
0650	01371	METAL END SECTION TY 1-18 IN	2.00	EACH
0655	01381	METAL END SECTION TY 2-18 IN	1.00	EACH
0660	23148EN	END ANCHORS	3.00	EACH
0665	04701	POLE 40 FT MTG HT	1.00	EACH
0670	04725	BRACKET 15 FT	1.00	EACH
0675	04740	POLE BASE	1.00	EACH
0680	04750	TRANSFORMER BASE	1.00	EACH
0685	04793	CONDUIT-1 1/4 IN	515.00	LF
0690	04820	TRENCHING AND BACKFILLING	515.00	LF
0695	04833	WIRE-NO. 8	1,030.00	LF
0700	20391NS835	ELECTRICAL JUNCTION BOX TYPE A	1.00	EACH

## MATERIAL SUMMARY

Project Line No	Bid Code	DESCRIPTION	Quantity	Unit
0705	20410ED	MAINTAIN LIGHTING - (BUTLER COUNTY)	1.00	LS
0710	24589ED	LED LUMINAIRE	31.00	EACH
0715	02998	MASONRY COATING	225.00	SQYD
0720	02998	MASONRY COATING	225.00	SQYD
0725	02998	MASONRY COATING	1,338.00	SQYD
0730	08504	EPOXY SAND SLURRY	97.00	SQYD
0735	08504	EPOXY SAND SLURRY	97.00	SQYD
0740	08504	EPOXY SAND SLURRY	648.00	SQYD
0745	23032EN	BRIDGE BARRIER RETROFIT	502.00	LF
0750	23032EN	BRIDGE BARRIER RETROFIT	502.00	LF
0755	23032EN	BRIDGE BARRIER RETROFIT	2,462.00	LF
0760	08549	BLAST CLEANING	97.00	SQYD
0765	08549	BLAST CLEANING	97.00	SQYD
0770	08549	BLAST CLEANING	648.00	SQYD
0775	08100	CONCRETE-CLASS A	20.00	CUYD
0780	08150	STEEL REINFORCEMENT	447.00	LB
0785	08003	FOUNDATION PREPARATION - BUTLER COUNTY	1.00	LS
0790	08410	LOW FLOW DIVERSION CURB - BUTLER COUNTY	1.00	LS
0795	22146EN	CONCRETE PATCHING REPAIR	80.00	SQFT
0800	02568	MOBILIZATION	1.00	LS
0805	02569	DEMOBILIZATION	1.00	LS
0810	00462	CULVERT PIPE-18 IN	450.00	LF
0815	00336	CL3 ASPH SURF 0.38A PG76-22 - DRIVING LANE PATCHING	372.00	TON
0820	03262	CLEAN PIPE STRUCTURE - (ADDED: 5-17-18)	4.00	EACH
0825	04780	FUSED CONNECTOR KIT - (ADDED: 5-17-18)	3.00	EACH

**CONTRACT ID: 181013**

**121GR18D013-NHPP**

**DE11401651813**

I-165 SPUR I-65 SPUR CORRIDOR; MODERNIZATION OF EXISTING NATCHER PARKWAY FROM I-65 INTERCHANGE MP 2.079 EXTENDING NORTH TO WARREN-BUTLER COUNTY LINE MP 20.246 ASPHALT REHAB INTERSTATE/PARKWAY, A DISTANCE OF 16.9 MILES.

Project Line No	Bid Code	DESCRIPTION	Quantity	Unit
0830	00003	CRUSHED STONE BASE	9,629.00	TON
0835	00100	ASPHALT SEAL AGGREGATE	36.00	TON
0840	00103	ASPHALT SEAL COAT	12.00	TON
0845	00212	CL2 ASPH BASE 1.00D PG64-22	2,319.00	TON
0850	00214	CL3 ASPH BASE 1.00D PG64-22	3,726.00	TON
0855	00216	CL3 ASPH BASE 1.00D PG76-22	1,779.00	TON
0860	00309	CL2 ASPH SURF 0.50D PG64-22	363.00	TON
0865	00332	CL3 ASPH SURF 0.50A PG76-22	827.00	TON
0870	00356	ASPHALT MATERIAL FOR TACK	18.00	TON
0875	02677	ASPHALT PAVE MILLING & TEXTURING	111.00	TON
0880	00078	CRUSHED AGGREGATE SIZE NO 2	10.00	TON
0885	00212	CL2 ASPH BASE 1.00D PG64-22	586.00	TON
0890	01000	PERFORATED PIPE-4 IN	2,450.00	LF
0895	01010	NON-PERFORATED PIPE-4 IN	72.00	LF

## MATERIAL SUMMARY

Project Line No	Bid Code	DESCRIPTION	Quantity	Unit
0900	01020	PERF PIPE HEADWALL TY 1-4 IN	4.00	EACH
0905	01028	PERF PIPE HEADWALL TY 3-4 IN	6.00	EACH
0910	01310	REMOVE PIPE	24.00	LF
0915	01890	ISLAND HEADER CURB TYPE 1	600.00	LF
0920	01982	DELINEATOR FOR GUARDRAIL MONO DIRECTIONAL WHITE	528.00	EACH
0925	01983	DELINEATOR FOR GUARDRAIL MONO DIRECTIONAL YELLOW	32.00	EACH
0930	01984	DELINEATOR FOR BARRIER - WHITE	156.00	EACH
0935	01985	DELINEATOR FOR BARRIER - YELLOW	56.00	EACH
0940	02003	RELOCATE TEMP CONC BARRIER	10,040.00	LF
0945	02014	BARRICADE-TYPE III	10.00	EACH
0950	02159	TEMP DITCH	9,383.00	LF
0955	02160	CLEAN TEMP DITCH	4,692.00	LF
0960	02200	ROADWAY EXCAVATION	16,241.00	CUYD
0965	02223	GRANULAR EMBANKMENT	100.00	CUYD
0970	02230	EMBANKMENT IN PLACE	9,645.00	CUYD
0975	02242	WATER	2,000.00	MGAL
0980	02363	GUARDRAIL CONNECTOR TO BRIDGE END TY A	16.00	EACH
0985	02367	GUARDRAIL END TREATMENT TYPE 1	5.00	EACH
0990	02369	GUARDRAIL END TREATMENT TYPE 2A	21.00	EACH
0995	02381	REMOVE GUARDRAIL	9,905.00	LF
1000	02383	REMOVE & RESET GUARDRAIL	18,337.50	LF
1005	02387	GUARDRAIL CONNECTOR TO BRIDGE END TY A-1	8.00	EACH
1010	02469	CLEAN SINKHOLE	2.00	EACH
1015	02483	CHANNEL LINING CLASS II	204.00	TON
1020	02562	TEMPORARY SIGNS	2,024.00	SQFT
1025	02599	FABRIC-GEOTEXTILE TYPE IV	200.00	SQYD
1030	02600	FABRIC GEOTEXTILE TY IV FOR PIPE	274.00	SQYD
1035	02650	MAINTAIN & CONTROL TRAFFIC - WARREN COUNTY	1.00	LS
1040	02671	PORTABLE CHANGEABLE MESSAGE SIGN	5.00	EACH
1045	02696	SHOULDER RUMBLE STRIPS	7,650.00	LF
1050	02701	TEMP SILT FENCE	9,383.00	LF
1055	02703	SILT TRAP TYPE A	13.00	EACH
1060	02704	SILT TRAP TYPE B	13.00	EACH
1065	02705	SILT TRAP TYPE C	13.00	EACH
1070	02706	CLEAN SILT TRAP TYPE A	13.00	EACH
1075	02707	CLEAN SILT TRAP TYPE B	13.00	EACH
1080	02708	CLEAN SILT TRAP TYPE C	13.00	EACH
1085	02714	SHOULDERING	7,611.00	LF
1090	02726	STAKING - WARREN COUNTY	1.00	LS
1095	02775	ARROW PANEL	3.00	EACH
1100	03171	CONCRETE BARRIER WALL TYPE 9T	3,800.00	LF
1105	05950	EROSION CONTROL BLANKET	56,847.00	SQYD
1110	05952	TEMP MULCH	37,898.00	SQYD
1115	05953	TEMP SEEDING AND PROTECTION	28,424.00	SQYD
1120	05963	INITIAL FERTILIZER	6.10	TON
1125	05964	20-10-10 FERTILIZER	3.20	TON
1130	05992	AGRICULTURAL LIMESTONE	37.00	TON
1135	06511	PAVE STRIPING-TEMP PAINT-6 IN	2,000.00	LF
1140	06517	PAVE STRIPING-PERM PAINT-12 IN	2,516.00	LF



## MATERIAL SUMMARY

Project Line No	Bid Code	DESCRIPTION	Quantity	Unit
1145	06549	PAVE STRIPING-TEMP REM TAPE-B	5,500.00	LF
1150	06550	PAVE STRIPING-TEMP REM TAPE-W	55,400.00	LF
1155	06551	PAVE STRIPING-TEMP REM TAPE-Y	22,200.00	LF
1160	06568	PAVE MARKING-THERMO STOP BAR-24IN	96.00	LF
1165	08903	CRASH CUSHION TY VI CLASS BT TL3	5.00	EACH
1170	10020NS	FUEL ADJUSTMENT	9,355.00	DOLL
1175	10030NS	ASPHALT ADJUSTMENT	41,865.00	DOLL
1180	20411ED	LAW ENFORCEMENT OFFICER	1,280.00	HOURL
1185	21802EN	G/R STEEL W BEAM-S FACE (7 FT POST)	9,525.00	LF
1190	22883EN	CONCRETE WEDGE CURB	11,084.00	LF
1195	23496EC	MEDIAN CROSSOVER REMOVAL - MEDIAN TURN-AROUND MP 3.6	1.00	EACH
1200	23496EC	MEDIAN CROSSOVER REMOVAL - MP 34.2	1.00	EACH
1205	24096EC	REMOVE AND RESET END TREATMENT	11.00	EACH
1210	02545	CLEARING AND GRUBBING - 1.10 ACRES-WARREN COUNTY	1.00	LS
1215	24605ED	RELOCATE - MEDIAN TURN-AROUND MP 9.9	1.00	EACH
1220	06514	PAVE STRIPING-PERM PAINT-4 IN	1,459.00	LF
1225	08002	STRUCTURE EXCAV-SOLID ROCK	5,211.00	CUYD
1230	02365	CRASH CUSHION TYPE IX-A	6.00	EACH
1235	02565	OBJECT MARKER TYPE 2	32.00	EACH
1240	02596	FABRIC-GEOTEXTILE TYPE I	327.00	SQYD
1245	06542	PAVE STRIPING-THERMO-6 IN W	21,510.00	LF
1250	06543	PAVE STRIPING-THERMO-6 IN Y	6,348.00	LF
1255	20071EC	JOINT ADHESIVE	7,406.00	LF
1260	20904ED	RECONSTRUCT CURB BOX INLET	6.00	EACH
1265	24605ED	RELOCATE - MEDIAN TURN-AROUND MP 14.8	1.00	EACH
1270	24605ED	RELOCATE - MEDIAN TURN-AROUND MP 20	1.00	EACH
1275	00461	CULVERT PIPE-15 IN	29.00	LF
1280	00462	CULVERT PIPE-18 IN	127.00	LF
1285	00521	STORM SEWER PIPE-15 IN	9.00	LF
1290	01202	PIPE CULVERT HEADWALL-15 IN	2.00	EACH
1295	01204	PIPE CULVERT HEADWALL-18 IN	1.00	EACH
1300	01208	PIPE CULVERT HEADWALL-24 IN	1.00	EACH
1305	01450	S & F BOX INLET-OUTLET-18 IN	6.00	EACH
1310	01480	CURB BOX INLET TYPE B	1.00	EACH
1315	01541	DROP BOX INLET TYPE 10	1.00	EACH
1320	01584	CAP DROP BOX INLET	1.00	EACH
1325	01690	FLUME INLET TYPE 1	4.00	EACH
1330	01691	FLUME INLET TYPE 2	7.00	EACH
1335	04700	POLE 30 FT MTG HT	36.00	EACH
1340	04720	BRACKET 4 FT	3.00	EACH
1345	04721	BRACKET 6 FT	2.00	EACH
1350	04724	BRACKET 12 FT	27.00	EACH
1355	04725	BRACKET 15 FT	4.00	EACH
1360	04740	POLE BASE	35.00	EACH
1365	04750	TRANSFORMER BASE	35.00	EACH
1370	04793	CONDUIT-1 1/4 IN	7,910.00	LF
1375	04820	TRENCHING AND BACKFILLING	7,795.00	LF
1380	04834	WIRE-NO. 6	15,820.00	LF
1385	20391NS835	ELECTRICAL JUNCTION BOX TYPE A	11.00	EACH



## MATERIAL SUMMARY

Project Line No	Bid Code	DESCRIPTION	Quantity	Unit
1390	20410ED	MAINTAIN LIGHTING - WARREN COUNTY	1.00	LS
1395	24589ED	LED LUMINAIRE	291.00	EACH
1400	02998	MASONRY COATING	200.00	SQYD
1405	02998	MASONRY COATING	200.00	SQYD
1410	02998	MASONRY COATING	193.00	SQYD
1415	02998	MASONRY COATING	97.00	SQYD
1420	02998	MASONRY COATING	220.00	SQYD
1425	02998	MASONRY COATING	220.00	SQYD
1430	02998	MASONRY COATING	253.00	SQYD
1435	02998	MASONRY COATING	253.00	SQYD
1440	02998	MASONRY COATING	220.00	SQYD
1445	08504	EPOXY SAND SLURRY	87.00	SQYD
1450	08504	EPOXY SAND SLURRY	87.00	SQYD
1455	08504	EPOXY SAND SLURRY	83.00	SQYD
1460	08504	EPOXY SAND SLURRY	42.00	SQYD
1465	08504	EPOXY SAND SLURRY	96.00	SQYD
1470	08504	EPOXY SAND SLURRY	96.00	SQYD
1475	08504	EPOXY SAND SLURRY	112.00	SQYD
1480	08504	EPOXY SAND SLURRY	112.00	SQYD
1485	08504	EPOXY SAND SLURRY	80.00	SQYD
1490	23032EN	BRIDGE BARRIER RETROFIT	449.00	LF
1495	23032EN	BRIDGE BARRIER RETROFIT	449.00	LF
1500	23032EN	BRIDGE BARRIER RETROFIT	431.00	LF
1505	23032EN	BRIDGE BARRIER RETROFIT	216.00	LF
1510	23032EN	BRIDGE BARRIER RETROFIT	494.00	LF
1515	23032EN	BRIDGE BARRIER RETROFIT	494.00	LF
1520	23032EN	BRIDGE BARRIER RETROFIT	569.00	LF
1525	23032EN	BRIDGE BARRIER RETROFIT	569.00	LF
1530	08549	BLAST CLEANING	87.00	SQYD
1535	08549	BLAST CLEANING	87.00	SQYD
1540	08549	BLAST CLEANING	83.00	SQYD
1545	08549	BLAST CLEANING	42.00	SQYD
1550	08549	BLAST CLEANING	744.00	SQYD
1555	08549	BLAST CLEANING	744.00	SQYD
1560	08549	BLAST CLEANING	112.00	SQYD
1565	08549	BLAST CLEANING	112.00	SQYD
1570	03298	EXPAN JOINT REPLACE 4 IN	67.00	LF
1575	03298	EXPAN JOINT REPLACE 4 IN	67.00	LF
1580	03299	ARMORED EDGE FOR CONCRETE	67.00	LF
1585	03299	ARMORED EDGE FOR CONCRETE	67.00	LF
1590	03299	ARMORED EDGE FOR CONCRETE	32.00	LF
1595	08150	STEEL REINFORCEMENT	267.00	LB
1600	08150	STEEL REINFORCEMENT	267.00	LB
1605	08150	STEEL REINFORCEMENT - (REVISED: 5-17-18)	11,457.00	LB
1610	08526	CONC CLASS M FULL DEPTH PATCH	7.00	CUYD
1615	08526	CONC CLASS M FULL DEPTH PATCH	7.00	CUYD
1620	08526	CONC CLASS M FULL DEPTH PATCH	3.00	CUYD
1625	08534	CONCRETE OVERLAY-LATEX	41.30	CUYD
1630	08534	CONCRETE OVERLAY-LATEX	41.30	CUYD
1635	08534	CONCRETE OVERLAY-LATEX	46.00	CUYD

## MATERIAL SUMMARY

Project Line No	Bid Code	DESCRIPTION	Quantity	Unit
1640	08551	MACHINE PREP OF SLAB	744.00	SQYD
1645	08551	MACHINE PREP OF SLAB	744.00	SQYD
1650	08551	MACHINE PREP OF SLAB	1,381.00	SQYD
1655	03304	BRIDGE OVERLAY APPROACH PAVEMENT	667.00	SQYD
1660	03304	BRIDGE OVERLAY APPROACH PAVEMENT	667.00	SQYD
1665	08100	CONCRETE-CLASS A	200.30	CUYD
1670	08104	CONCRETE-CLASS AA	117.70	CUYD
1675	08151	STEEL REINFORCEMENT-EPOXY COATED	27,688.00	LB
1680	08001	STRUCTURE EXCAVATION-COMMON	185.00	CUYD
1685	08016	REINF CONC SLOPE WALL-6 IN	170.00	SQYD
1690	02231	STRUCTURE GRANULAR BACKFILL	78.00	CUYD
1695	08046	PILES-STEEL HP12X53	255.00	LF
1700	08051	PILES-STEEL HP14X89	8.00	LF
1705	08033	TEST PILES	92.00	LF
1710	21532ED	RAIL SYSTEM TYPE III	195.00	LF
1715	21777EN	DRILLED SHAFT COMMON-54 IN - (REVISED: 5-17-18)	44.90	LF
1720	20637ED	DRILLED SHAFT-ROCK 48 IN	20.00	LF
1725	03295	EXPAN JOINT REPLACE 2 IN	131.00	LF
1730	08709	BRIDGE CHAIN LINK FENCE-7 FT	780.00	LF
1735	23981EC	PPC I-BEAM TYPE HN 42-49	375.00	LF
1740	02568	MOBILIZATION	1.00	LS
1745	02569	DEMOBILIZATION	1.00	LS
1750	02403	REMOVE CONCRETE MASONRY	55.00	CUYD
1755	04793	CONDUIT-1 1/4 IN	210.00	LF
1760	08549	BLAST CLEANING	1,421.00	SQYD
1765	20745ED	ROCK SOUNDINGS	40.00	LF
1770	20746ED	ROCK CORINGS	22.00	LF
1775	02676	MOBILIZATION FOR MILL & TEXT - Warren Co.	1.00	LS
1780	24094EC	PARTIAL DEPTH PATCHING - (ADDED: 5-17-18)	4.00	CUYD
1785	24094EC	PARTIAL DEPTH PATCHING - (ADDED: 5-17-18)	11.00	CUYD
1790	24094EC	PARTIAL DEPTH PATCHING - (ADDED: 5-17-18)	11.00	CUYD
1795	04780	FUSED CONNECTOR KIT - (ADDED: 5-17-18)	81.00	EACH

**PROPOSAL BID ITEMS**

181013

Page 1 of 9

Report Date 5/17/18

**Section: 0001 - PAVING**

LINE	BID CODE	ALT	DESCRIPTION	QUANTITY	UNIT	UNIT PRIC	FP	AMOUNT
0010	00001		DGA BASE	6,093.00	TON		\$	
0020	00003		CRUSHED STONE BASE	12,866.00	TON		\$	
0030	00003		CRUSHED STONE BASE SHOULDER REPAIR	147.00	TON		\$	
0040	00071		CRUSHED AGGREGATE SIZE NO 57	19.00	TON		\$	
0050	00078		CRUSHED AGGREGATE SIZE NO 2	5,213.00	TON		\$	
0060	00100		ASPHALT SEAL AGGREGATE	428.00	TON		\$	
0070	00103		ASPHALT SEAL COAT	59.00	TON		\$	
0080	00190		LEVELING & WEDGING PG64-22	1,388.00	TON		\$	
0090	00212		CL2 ASPH BASE 1.00D PG64-22	20,130.00	TON		\$	
0100	00212		CL2 ASPH BASE 1.00D PG64-22 SHOULDER REPAIR	222.00	TON		\$	
0110	00214		CL3 ASPH BASE 1.00D PG64-22	19,961.00	TON		\$	
0120	00214		CL3 ASPH BASE 1.00D PG64-22 SHOULDER REPAIR	24.00	TON		\$	
0130	00216		CL3 ASPH BASE 1.00D PG76-22	14,457.00	TON		\$	
0140	00216		CL3 ASPH BASE 1.00D PG76-22 SHOULDER REPAIR	12.00	TON		\$	
0150	00309		CL2 ASPH SURF 0.50D PG64-22	3,872.00	TON		\$	
0160	00309		CL2 ASPH SURF 0.50D PG64-22 SHOULDER REPAIR	29.00	TON		\$	
0170	00330		CL3 ASPH SURF 0.50A PG64-22	147.00	TON		\$	
0180	00332		CL3 ASPH SURF 0.50A PG76-22	7,250.00	TON		\$	
0190	00332		CL3 ASPH SURF 0.50A PG76-22 SHOULDER REPAIR	6.00	TON		\$	
0200	00336		CL3 ASPH SURF 0.38A PG76-22 DRIVING LANE PATCHING	372.00	TON		\$	
0210	00356		ASPHALT MATERIAL FOR TACK	115.80	TON		\$	
0220	02676		MOBILIZATION FOR MILL & TEXT Warren Co.	1.00	LS		\$	
0230	02677		ASPHALT PAVE MILLING & TEXTURING	619.00	TON		\$	
0240	22861EN		HIGH STRENGTH GEOTEXTILE FABRIC TY V	6,777.00	SQYD		\$	

**Section: 0002 - ROADWAY**

LINE	BID CODE	ALT	DESCRIPTION	QUANTITY	UNIT	UNIT PRIC	FP	AMOUNT
0250	00078		CRUSHED AGGREGATE SIZE NO 2	40.00	TON		\$	
0260	00212		CL2 ASPH BASE 1.00D PG64-22	967.00	TON		\$	
0270	01000		PERFORATED PIPE-4 IN	2,450.00	LF		\$	
0280	01005		PERFORATED PIPE EDGE DRAIN-4 IN	49,146.00	LF		\$	
0290	01010		NON-PERFORATED PIPE-4 IN	1,638.00	LF		\$	
0300	01015		INSPECT & CERTIFY EDGE DRAIN SYSTEM BUTLER COUNTY	1.00	LS		\$	
0310	01020		PERF PIPE HEADWALL TY 1-4 IN	4.00	EACH		\$	
0320	01028		PERF PIPE HEADWALL TY 3-4 IN	206.00	EACH		\$	
0330	01310		REMOVE PIPE	2,425.00	LF		\$	
0340	01718		REMOVE INLET	13.00	EACH		\$	
0350	01740		CORED HOLE DRAINAGE BOX CON-4 IN	4.00	EACH		\$	

**PROPOSAL BID ITEMS**

181013

Report Date 5/17/18

LINE	BID CODE	ALT	DESCRIPTION	QUANTITY	UNIT	UNIT PRIC	FP	AMOUNT
0360	01890		ISLAND HEADER CURB TYPE 1	1,200.00	LF		\$	
0370	01904		REMOVE CURB	7,055.00	LF		\$	
0380	01982		DELINEATOR FOR GUARDRAIL MONO DIRECTIONAL WHITE	1,432.00	EACH		\$	
0390	01983		DELINEATOR FOR GUARDRAIL MONO DIRECTIONAL YELLOW	90.00	EACH		\$	
0400	01984		DELINEATOR FOR BARRIER - WHITE	270.00	EACH		\$	
0410	01985		DELINEATOR FOR BARRIER - YELLOW	130.00	EACH		\$	
0420	02003		RELOCATE TEMP CONC BARRIER	16,320.00	LF		\$	
0430	02014		BARRICADE-TYPE III	16.00	EACH		\$	
0440	02107		BREAKING AND SEATING PAVEMENT	70,934.00	SQYD		\$	
0450	02159		TEMP DITCH	21,643.00	LF		\$	
0460	02160		CLEAN TEMP DITCH	10,823.00	LF		\$	
0470	02165		REMOVE PAVED DITCH	2,219.00	SQYD		\$	
0480	02200		ROADWAY EXCAVATION	21,232.00	CUYD		\$	
0490	02223		GRANULAR EMBANKMENT	200.00	CUYD		\$	
0500	02230		EMBANKMENT IN PLACE	32,687.00	CUYD		\$	
0510	02237		DITCHING	18,040.00	LF		\$	
0520	02242		WATER	4,000.00	MGAL		\$	
0530	02352		GUARDRAIL-STEEL W BEAM-D FACE	1,175.00	LF		\$	
0540	02363		GUARDRAIL CONNECTOR TO BRIDGE END TY A	31.00	EACH		\$	
0550	02365		CRASH CUSHION TYPE IX-A	9.00	EACH		\$	
0560	02367		GUARDRAIL END TREATMENT TYPE 1	13.00	EACH		\$	
0570	02369		GUARDRAIL END TREATMENT TYPE 2A	62.00	EACH		\$	
0580	02373		GUARDRAIL END TREATMENT TYPE 3	3.00	EACH		\$	
0590	02381		REMOVE GUARDRAIL	26,180.00	LF		\$	
0600	02383		REMOVE & RESET GUARDRAIL	47,587.50	LF		\$	
0610	02387		GUARDRAIL CONNECTOR TO BRIDGE END TY A-1	13.00	EACH		\$	
0620	02396		REMOVE GUARDRAIL END TREATMENT	17.00	EACH		\$	
0630	02469		CLEAN SINKHOLE	4.00	EACH		\$	
0640	02483		CHANNEL LINING CLASS II	2,732.00	TON		\$	
0650	02545		CLEARING AND GRUBBING .058 ACRES-BUTLER COUNTY	1.00	LS		\$	
0660	02545		CLEARING AND GRUBBING 1.10 ACRES-WARREN COUNTY	1.00	LS		\$	
0670	02562		TEMPORARY SIGNS	3,792.00	SQFT		\$	
0680	02565		OBJECT MARKER TYPE 2	42.00	EACH		\$	
0690	02596		FABRIC-GEOTEXTILE TYPE I	4,381.00	SQYD		\$	
0700	02599		FABRIC-GEOTEXTILE TYPE IV	6,599.00	SQYD		\$	
0710	02600		FABRIC GEOTEXTILE TY IV FOR PIPE	274.00	SQYD	\$2.00	\$	\$548.00
0720	02625		REMOVE HEADWALL	11.00	EACH		\$	
0730	02650		MAINTAIN & CONTROL TRAFFIC BUTLER COUNTY	1.00	LS		\$	
0740	02650		MAINTAIN & CONTROL TRAFFIC WARREN COUNTY	1.00	LS		\$	
0750	02671		PORTABLE CHANGEABLE MESSAGE SIGN	8.00	EACH		\$	
0760	02676		MOBILIZATION FOR MILL & TEXT BUTLER COUNTY	1.00	LS		\$	
0770	02678		SCARIFYING PAVEMENT	36,712.00	SQYD		\$	
0780	02690		SAFELOADING	2.00	CUYD		\$	

**PROPOSAL BID ITEMS**

REVISED ADDENDUM #1: 5-17-18

181013

Page 3 of 9

Report Date 5/17/18

LINE	BID CODE	ALT	DESCRIPTION	QUANTITY	UNIT	UNIT PRIC	FP	AMOUNT
0790	02696		SHOULDER RUMBLE STRIPS	62,671.00	LF		\$	
0800	02701		TEMP SILT FENCE	21,643.00	LF		\$	
0810	02703		SILT TRAP TYPE A	23.00	EACH		\$	
0820	02704		SILT TRAP TYPE B	23.00	EACH		\$	
0830	02705		SILT TRAP TYPE C	23.00	EACH		\$	
0840	02706		CLEAN SILT TRAP TYPE A	23.00	EACH		\$	
0850	02707		CLEAN SILT TRAP TYPE B	23.00	EACH		\$	
0860	02708		CLEAN SILT TRAP TYPE C	23.00	EACH		\$	
0870	02714		SHOULDERING	9,888.00	LF		\$	
0880	02726		STAKING BUTLER COUNTY	1.00	LS		\$	
0890	02726		STAKING WARREN COUNTY	1.00	LS		\$	
0900	02775		ARROW PANEL	6.00	EACH		\$	
0910	02898		RELOCATE CRASH CUSHION	9.00	EACH		\$	
0920	02929		CRASH CUSHION TYPE IX	1.00	EACH		\$	
0930	03171		CONCRETE BARRIER WALL TYPE 9T	8,100.00	LF		\$	
0935	03262		CLEAN PIPE STRUCTURE (ADDED: 5-17-18)	4.00	EACH		\$	
0940	05950		EROSION CONTROL BLANKET	91,776.00	SQYD		\$	
0950	05952		TEMP MULCH	61,184.00	SQYD		\$	
0960	05953		TEMP SEEDING AND PROTECTION	45,889.00	SQYD		\$	
0970	05963		INITIAL FERTILIZER	9.90	TON		\$	
0980	05964		20-10-10 FERTILIZER	5.30	TON		\$	
0990	05985		SEEDING AND PROTECTION	48,648.00	SQYD		\$	
1000	05992		AGRICULTURAL LIMESTONE	60.00	TON		\$	
1010	06401		FLEXIBLE DELINEATOR POST-M/W	40.00	EACH		\$	
1020	06404		FLEXIBLE DELINEATOR POST-M/Y	32.00	EACH		\$	
1030	06511		PAVE STRIPING-TEMP PAINT-6 IN	154,000.00	LF		\$	
1040	06514		PAVE STRIPING-PERM PAINT-4 IN	1,459.00	LF		\$	
1050	06517		PAVE STRIPING-PERM PAINT-12 IN	3,970.00	LF		\$	
1060	06542		PAVE STRIPING-THERMO-6 IN W	75,791.00	LF		\$	
1070	06543		PAVE STRIPING-THERMO-6 IN Y	34,928.00	LF		\$	
1080	06546		PAVE STRIPING-THERMO-12 IN W	999.00	LF		\$	
1090	06549		PAVE STRIPING-TEMP REM TAPE-B	10,340.00	LF		\$	
1100	06550		PAVE STRIPING-TEMP REM TAPE-W	92,700.00	LF		\$	
1110	06551		PAVE STRIPING-TEMP REM TAPE-Y	41,400.00	LF		\$	
1120	06568		PAVE MARKING-THERMO STOP BAR-24IN	96.00	LF		\$	
1130	08002		STRUCTURE EXCAV-SOLID ROCK	18,717.00	CUYD		\$	
1140	08903		CRASH CUSHION TY VI CLASS BT TL3	8.00	EACH		\$	
1150	10020NS		FUEL ADJUSTMENT	104,027.00	DOLL	\$1.00	\$	\$104,027.00
1160	10030NS		ASPHALT ADJUSTMENT	270,807.00	DOLL	\$1.00	\$	\$270,807.00
1170	20071EC		JOINT ADHESIVE	58,110.00	LF		\$	
1180	20366NN		REPLACE GRATE	2.00	EACH		\$	
1190	20411ED		LAW ENFORCEMENT OFFICER	2,560.00	HOURL		\$	
1200	20418ED		REMOVE & RELOCATE SIGNS	13.00	EACH		\$	
1210	20432ES112		REMOVE CRASH CUSHION	4.00	EACH		\$	
1220	20597EC		DITCH EXCAVATION	101.00	CUYD		\$	
1230	20904ED		RECONSTRUCT CURB BOX INLET	6.00	EACH		\$	
1240	21289ED		LONGITUDINAL EDGE KEY	2,275.00	LF		\$	

**PROPOSAL BID ITEMS**

181013

Report Date 5/17/18

LINE	BID CODE	ALT	DESCRIPTION	QUANTITY	UNIT	UNIT PRIC	FP	AMOUNT
1250	21802EN		G/R STEEL W BEAM-S FACE (7 FT POST)	25,762.50	LF		\$	
1260	22883EN		CONCRETE WEDGE CURB	26,069.00	LF		\$	
1270	23496EC		MEDIAN CROSSOVER REMOVAL AROUND MP 35.4	1.00	EACH		\$	
1280	23496EC		MEDIAN CROSSOVER REMOVAL MEDIAN TURN-AROUND MP 3.6	1.00	EACH		\$	
1290	23496EC		MEDIAN CROSSOVER REMOVAL MP 34.2	1.00	EACH		\$	
1300	24096EC		REMOVE AND RESET END TREATMENT	36.00	EACH		\$	
1310	24489EC		INLAID PAVEMENT MARKER	378.00	EACH		\$	
1320	24605ED		RELOCATE MEDIAN TURN-AROUND MP 14.8	1.00	EACH		\$	
1330	24605ED		RELOCATE MEDIAN TURN-AROUND MP 20	1.00	EACH		\$	
1340	24605ED		RELOCATE MEDIAN TURN-AROUND MP 34.2	1.00	EACH		\$	
1350	24605ED		RELOCATE MEDIAN TURN-AROUND MP 9.9	1.00	EACH		\$	
1360	24654ED		SINGLE SLOPE MEDIAN BARRIER @ GREEN RIVER BRIDGE	200.00	LF		\$	
1370	24979ED		REGRADE MEDIAN TURN-AROUND MP 25.4	2.00	EACH		\$	
1380	24980ED		ADJUST CRASH WALL HEIGHT @ EXIT 36 BRIDGE	1.00	L S		\$	
1390	40024		ASPHALT PAVEMENT REMOVAL(ALL DEPTHS)	3,334.00	SQYD		\$	

**Section: 0003 - DRAINAGE**

LINE	BID CODE	ALT	DESCRIPTION	QUANTITY	UNIT	UNIT PRIC	FP	AMOUNT
1400	00461		CULVERT PIPE-15 IN	29.00	LF		\$	
1410	00462		CULVERT PIPE-18 IN	577.00	LF		\$	
1420	00521		STORM SEWER PIPE-15 IN	9.00	LF		\$	
1430	00522		STORM SEWER PIPE-18 IN	45.00	LF		\$	
1440	01202		PIPE CULVERT HEADWALL-15 IN	2.00	EACH		\$	
1450	01204		PIPE CULVERT HEADWALL-18 IN	1.00	EACH		\$	
1460	01208		PIPE CULVERT HEADWALL-24 IN	1.00	EACH		\$	
1470	01371		METAL END SECTION TY 1-18 IN	2.00	EACH		\$	
1480	01381		METAL END SECTION TY 2-18 IN	1.00	EACH		\$	
1490	01450		S & F BOX INLET-OUTLET-18 IN	7.00	EACH		\$	
1500	01480		CURB BOX INLET TYPE B	2.00	EACH		\$	
1510	01541		DROP BOX INLET TYPE 10	1.00	EACH		\$	
1520	01559		DROP BOX INLET TYPE 13G	1.00	EACH		\$	
1530	01584		CAP DROP BOX INLET	1.00	EACH		\$	
1540	01690		FLUME INLET TYPE 1	10.00	EACH		\$	
1550	01691		FLUME INLET TYPE 2	26.00	EACH		\$	
1560	23148EN		END ANCHORS	3.00	EACH		\$	

**Section: 0004 - BRIDGE- 016B00057L**

**PROPOSAL BID ITEMS**

181013

Page 5 of 9

Report Date 5/17/18

LINE	BID CODE	ALT	DESCRIPTION	QUANTITY	UNIT	UNIT PRIC	FP	AMOUNT
1570	02998		MASONRY COATING	225.00	SQYD		\$	
1580	08504		EPOXY SAND SLURRY	97.00	SQYD		\$	
1590	08549		BLAST CLEANING	97.00	SQYD		\$	
1600	23032EN		BRIDGE BARRIER RETROFIT	502.00	LF		\$	

**Section: 0005 - BRIDGE- 114B00051L**

LINE	BID CODE	ALT	DESCRIPTION	QUANTITY	UNIT	UNIT PRIC	FP	AMOUNT
1610	02998		MASONRY COATING	200.00	SQYD		\$	
1620	08504		EPOXY SAND SLURRY	87.00	SQYD		\$	
1630	08549		BLAST CLEANING	87.00	SQYD		\$	
1640	23032EN		BRIDGE BARRIER RETROFIT	449.00	LF		\$	

**Section: 0006 - BRIDGE- 016B00057R**

LINE	BID CODE	ALT	DESCRIPTION	QUANTITY	UNIT	UNIT PRIC	FP	AMOUNT
1650	02998		MASONRY COATING	225.00	SQYD		\$	
1660	08504		EPOXY SAND SLURRY	97.00	SQYD		\$	
1670	08549		BLAST CLEANING	97.00	SQYD		\$	
1680	23032EN		BRIDGE BARRIER RETROFIT	502.00	LF		\$	

**Section: 0007 - BRIDGE- 114B00051R**

LINE	BID CODE	ALT	DESCRIPTION	QUANTITY	UNIT	UNIT PRIC	FP	AMOUNT
1690	02998		MASONRY COATING	200.00	SQYD		\$	
1700	08504		EPOXY SAND SLURRY	87.00	SQYD		\$	
1710	08549		BLAST CLEANING	87.00	SQYD		\$	
1720	23032EN		BRIDGE BARRIER RETROFIT	449.00	LF		\$	

**Section: 0008 - BRIDGE-CULVERT- 016B00058N**

LINE	BID CODE	ALT	DESCRIPTION	QUANTITY	UNIT	UNIT PRIC	FP	AMOUNT
1730	08003		FOUNDATION PREPARATION BUTLER COUNTY	1.00	LS		\$	
1740	08100		CONCRETE-CLASS A	20.00	CUYD		\$	
1750	08150		STEEL REINFORCEMENT	447.00	LB		\$	
1760	08410		LOW FLOW DIVERSION CURB BUTLER COUNTY	1.00	LS		\$	
1770	22146EN		CONCRETE PATCHING REPAIR	80.00	SQFT		\$	

**Section: 0009 - BRIDGE- 114B00052L**

LINE	BID CODE	ALT	DESCRIPTION	QUANTITY	UNIT	UNIT PRIC	FP	AMOUNT
1780	02998		MASONRY COATING	193.00	SQYD		\$	

**PROPOSAL BID ITEMS**

REVISED ADDENDUM #1: 5-17-18

181013

Page 6 of 9

Report Date 5/17/18

LINE	BID CODE	ALT	DESCRIPTION	QUANTITY	UNIT	UNIT PRIC	FP	AMOUNT
1790	08504		EPOXY SAND SLURRY	83.00	SQYD		\$	
1800	08549		BLAST CLEANING	83.00	SQYD		\$	
1810	23032EN		BRIDGE BARRIER RETROFIT	431.00	LF		\$	

**Section: 0010 - BRIDGE- 016B00061N**

LINE	BID CODE	ALT	DESCRIPTION	QUANTITY	UNIT	UNIT PRIC	FP	AMOUNT
1820	02998		MASONRY COATING	1,338.00	SQYD		\$	
1830	08504		EPOXY SAND SLURRY	648.00	SQYD		\$	
1840	08549		BLAST CLEANING	648.00	SQYD		\$	
1850	23032EN		BRIDGE BARRIER RETROFIT	2,462.00	LF		\$	

**Section: 0011 - BRIDGE-114B00052R**

LINE	BID CODE	ALT	DESCRIPTION	QUANTITY	UNIT	UNIT PRIC	FP	AMOUNT
1860	02998		MASONRY COATING	97.00	SQYD		\$	
1870	08504		EPOXY SAND SLURRY	42.00	SQYD		\$	
1880	08549		BLAST CLEANING	42.00	SQYD		\$	
1890	23032EN		BRIDGE BARRIER RETROFIT	216.00	LF		\$	

**Section: 0012 - BRIDGE- 114B00053L**

LINE	BID CODE	ALT	DESCRIPTION	QUANTITY	UNIT	UNIT PRIC	FP	AMOUNT
1900	02998		MASONRY COATING	220.00	SQYD		\$	
1910	03298		EXPAN JOINT REPLACE 4 IN	67.00	LF		\$	
1920	03299		ARMORED EDGE FOR CONCRETE	67.00	LF		\$	
1930	03304		BRIDGE OVERLAY APPROACH PAVEMENT	667.00	SQYD		\$	
1940	08150		STEEL REINFORCEMENT	267.00	LB		\$	
1950	08504		EPOXY SAND SLURRY	96.00	SQYD		\$	
1960	08526		CONC CLASS M FULL DEPTH PATCH	7.00	CUYD		\$	
1970	08534		CONCRETE OVERLAY-LATEX	41.30	CUYD		\$	
1980	08549		BLAST CLEANING	744.00	SQYD		\$	
1990	08551		MACHINE PREP OF SLAB	744.00	SQYD		\$	
2000	23032EN		BRIDGE BARRIER RETROFIT	494.00	LF		\$	
2005	24094EC		PARTIAL DEPTH PATCHING (ADDED: 5-17-18)	11.00	CUYD		\$	

**Section: 0013 - BRIDGE- 114B00053R**

LINE	BID CODE	ALT	DESCRIPTION	QUANTITY	UNIT	UNIT PRIC	FP	AMOUNT
2010	02998		MASONRY COATING	220.00	SQYD		\$	
2020	03298		EXPAN JOINT REPLACE 4 IN	67.00	LF		\$	
2030	03299		ARMORED EDGE FOR CONCRETE	67.00	LF		\$	
2040	03304		BRIDGE OVERLAY APPROACH PAVEMENT	667.00	SQYD		\$	
2050	08150		STEEL REINFORCEMENT	267.00	LB		\$	



**PROPOSAL BID ITEMS**

181013

Page 7 of 9

Report Date 5/17/18

LINE	BID CODE	ALT	DESCRIPTION	QUANTITY	UNIT	UNIT PRIC	FP	AMOUNT
2060	08504		EPOXY SAND SLURRY	96.00	SQYD		\$	
2070	08526		CONC CLASS M FULL DEPTH PATCH	7.00	CUYD		\$	
2080	08534		CONCRETE OVERLAY-LATEX	41.30	CUYD		\$	
2090	08549		BLAST CLEANING	744.00	SQYD		\$	
2100	08551		MACHINE PREP OF SLAB	744.00	SQYD		\$	
2110	23032EN		BRIDGE BARRIER RETROFIT	494.00	LF		\$	
2115	24094EC		PARTIAL DEPTH PATCHING (ADDED: 5-17-18)	11.00	CUYD		\$	

**Section: 0014 - BRIDGE- 114B00054L**

LINE	BID CODE	ALT	DESCRIPTION	QUANTITY	UNIT	UNIT PRIC	FP	AMOUNT
2120	02998		MASONRY COATING	253.00	SQYD		\$	
2130	08504		EPOXY SAND SLURRY	112.00	SQYD		\$	
2140	08549		BLAST CLEANING	112.00	SQYD		\$	
2150	23032EN		BRIDGE BARRIER RETROFIT	569.00	LF		\$	

**Section: 0015 - BRIDGE- 114B00054R**

LINE	BID CODE	ALT	DESCRIPTION	QUANTITY	UNIT	UNIT PRIC	FP	AMOUNT
2160	02998		MASONRY COATING	253.00	SQYD		\$	
2170	08504		EPOXY SAND SLURRY	112.00	SQYD		\$	
2180	08549		BLAST CLEANING	112.00	SQYD		\$	
2190	23032EN		BRIDGE BARRIER RETROFIT	569.00	LF		\$	

**Section: 0016 - BRIDGE- OVER CSX RAILROAD**

LINE	BID CODE	ALT	DESCRIPTION	QUANTITY	UNIT	UNIT PRIC	FP	AMOUNT
1815	24094EC		PARTIAL DEPTH PATCHING (ADDED: 5-17-18)	4.00	CUYD		\$	
2210	02231		STRUCTURE GRANULAR BACKFILL	78.00	CUYD		\$	
2220	02403		REMOVE CONCRETE MASONRY	55.00	CUYD		\$	
2230	02998		MASONRY COATING	220.00	SQYD		\$	
2240	03295		EXPAN JOINT REPLACE 2 IN	131.00	LF		\$	
2250	03299		ARMORED EDGE FOR CONCRETE	32.00	LF		\$	
2260	04793		CONDUIT-1 1/4 IN	210.00	LF		\$	
2270	08001		STRUCTURE EXCAVATION-COMMON	185.00	CUYD		\$	
2280	08016		REINF CONC SLOPE WALL-6 IN	170.00	SQYD		\$	
2290	08033		TEST PILES	92.00	LF		\$	
2300	08046		PILES-STEEL HP12X53	255.00	LF		\$	
2310	08051		PILES-STEEL HP14X89	8.00	LF		\$	
2320	08100		CONCRETE-CLASS A	200.30	CUYD		\$	
2330	08104		CONCRETE-CLASS AA	117.70	CUYD		\$	
2340	08150		STEEL REINFORCEMENT (REVISED: 5-17-18)	11,457.00	LB		\$	
2350	08151		STEEL REINFORCEMENT-EPOXY COATED	27,688.00	LB		\$	
2360	08504		EPOXY SAND SLURRY	80.00	SQYD		\$	

**PROPOSAL BID ITEMS**

REVISED ADDENDUM #1: 5-17-18

181013

Page 8 of 9

Report Date 5/17/18

LINE	BID CODE	ALT	DESCRIPTION	QUANTITY	UNIT	UNIT PRIC	FP	AMOUNT
2370	08526		CONC CLASS M FULL DEPTH PATCH	3.00	CUYD		\$	
2380	08534		CONCRETE OVERLAY-LATEX	46.00	CUYD		\$	
2390	08549		BLAST CLEANING	1,421.00	SQYD		\$	
2400	08551		MACHINE PREP OF SLAB	1,381.00	SQYD		\$	
2410	08709		BRIDGE CHAIN LINK FENCE-7 FT	780.00	LF		\$	
2420	20637ED		DRILLED SHAFT-ROCK 48 IN	20.00	LF		\$	
2430	20745ED		ROCK SOUNDINGS	40.00	LF		\$	
2440	20746ED		ROCK CORINGS	22.00	LF		\$	
2450	21532ED		RAIL SYSTEM TYPE III	195.00	LF		\$	
2460	21777EN		DRILLED SHAFT COMMON-54 IN (REVISED: 5-17-18)	44.90	LF		\$	
2470	23981EC		PPC I-BEAM TYPE HN 42-49	375.00	LF		\$	

**Section: 0017 - LIGHTING**

LINE	BID CODE	ALT	DESCRIPTION	QUANTITY	UNIT	UNIT PRIC	FP	AMOUNT
2480	04701		POLE 40 FT MTG HT	1.00	EACH		\$	
2490	04725		BRACKET 15 FT	1.00	EACH		\$	
2500	04740		POLE BASE	1.00	EACH		\$	
2510	04750		TRANSFORMER BASE	1.00	EACH		\$	
2515	04780		FUSED CONNECTOR KIT (ADDED: 5-17-18)	3.00	EACH		\$	
2520	04793		CONDUIT-1 1/4 IN	515.00	LF		\$	
2530	04820		TRENCHING AND BACKFILLING	515.00	LF		\$	
2540	04833		WIRE-NO. 8	1,030.00	LF		\$	
2550	20391NS835		ELECTRICAL JUNCTION BOX TYPE A	1.00	EACH		\$	
2560	20410ED		MAINTAIN LIGHTING (BUTLER COUNTY)	1.00	LS		\$	
2570	24589ED		LED LUMINAIRE	31.00	EACH		\$	

**Section: 0018 - LIGHTING**

LINE	BID CODE	ALT	DESCRIPTION	QUANTITY	UNIT	UNIT PRIC	FP	AMOUNT
2580	04700		POLE 30 FT MTG HT	36.00	EACH		\$	
2590	04720		BRACKET 4 FT	3.00	EACH		\$	
2600	04721		BRACKET 6 FT	2.00	EACH		\$	
2610	04724		BRACKET 12 FT	27.00	EACH		\$	
2620	04725		BRACKET 15 FT	4.00	EACH		\$	
2630	04740		POLE BASE	35.00	EACH		\$	
2640	04750		TRANSFORMER BASE	35.00	EACH		\$	
2645	04780		FUSED CONNECTOR KIT (ADDED: 5-17-18)	81.00	EACH		\$	
2650	04793		CONDUIT-1 1/4 IN	7,910.00	LF		\$	
2660	04820		TRENCHING AND BACKFILLING	7,795.00	LF		\$	
2670	04834		WIRE-NO. 6	15,820.00	LF		\$	
2680	20391NS835		ELECTRICAL JUNCTION BOX TYPE A	11.00	EACH		\$	
2690	20410ED		MAINTAIN LIGHTING WARREN COUNTY	1.00	LS		\$	

### PROPOSAL BID ITEMS

Report Date 5/17/18

LINE	BID CODE	ALT	DESCRIPTION	QUANTITY	UNIT	UNIT PRIC	FP	AMOUNT
2700	24589ED		LED LUMINAIRE	291.00	EACH		\$	

#### Section: 0019 - MOBILIZATION AND DEMOBILIZATION

LINE	BID CODE	ALT	DESCRIPTION	QUANTITY	UNIT	UNIT PRIC	FP	AMOUNT
2710	02568		MOBILIZATION	1.00	LS		\$	
2720	02569		DEMOBILIZATION	1.00	LS		\$	